

Funding

We have some scholarships for postgraduate taught programmes and for research. Please visit www.sheffield.ac.uk/law/prospective/pgt/scholarships and www.sheffield.ac.uk/law/prospective/researchdegrees/scholarships. Other sources of funding are available – please see www.shef.ac.uk/ssid/finance/pg. If you are an international student, you can find out about scholarships from our International Office on www.shef.ac.uk/international/enquiry/money/scholarships.

The School of Law

The School of Law has a considerable reputation and a tradition of excellence stretching back over a hundred years. We are placed in the UK's Top 20 law schools for research, and rated Excellent for teaching. All this, within a Russell Group University, makes Sheffield an excellent choice for postgraduate study.

The School of Law is based in its own dedicated building, Bartolomé House, close to the main university campus. Built at the end of the 1800s and forming three sides of a rectangle, this impressive red brick building has arches, gargoyles and decorative wrought ironwork. Two public parks are directly opposite and provide a pleasant outlook. In every sense, this is a School to be proud of and the building itself contributes to the special sense of pride and community experienced by our students and staff.

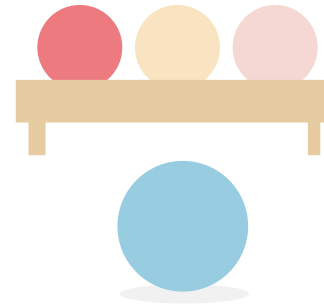
We offer excellent IT provision, wireless connectivity, a dedicated postgraduate study room with networked computers, office space for research students and an internet café area.

The School of Law will be very much your base and place of work as a postgraduate student. We are sponsored by several top law firms and former students, now judges, barristers or solicitors, visit and support us. We are also connected to lawyers, academics, universities and agencies throughout the world, to the benefit of our postgraduates and their studies.



Living in Sheffield

Sheffield is England's fourth largest city with an impressive industrial past and a redesigned city centre. This is a place with an important civic history. Two theatres, shops, cinemas, art galleries, bars and restaurants enhance the bustling centre. Originally famous for steel manufacturing, Sheffield is clean, green and has a good reputation for safety. What could be better than a big city set within a park? About a third of Sheffield is within the Peak District National Park which has magnificent scenery, historic houses, fine walking country, and some of the best rock climbing in the UK. Our new Student Villages can offer en-suite study bedrooms in flats: some accommodation and houses are reserved specifically for postgraduates. Please visit www.sheffield.ac.uk/accommodation for details.



Contact Us

Please visit our website for further details including information on how to apply.

The School of Law, The University of Sheffield,
Bartolomé House, Winter Street, Sheffield S3 7ND

T: +44 (0)114 222 6770

E: pgradlaw@sheffield.ac.uk

W: www.sheffield.ac.uk/law/prospective/pgt or
www.sheffield.ac.uk/law/research



The
University
Of
Sheffield.

The
School
Of
Law.

Postgraduate Study
in Criminology
at the University of Sheffield.

prepared to succeed

Taught Programme

MA in International Criminology

This one year full time programme provides its graduates with a thorough understanding of criminology and criminal justice from international and comparative dimensions. This is one of the few programmes to use such perspectives to explore the key issues. Taught by leading researchers, the course is a well-known and highly respected one: criminology has been taught at Sheffield for over 30 years and the University of Sheffield is one of Europe's leading centres of excellence in this subject area.

The MA in International Criminology (MAIC) offers three possible pathways for students to choose from:

- The taught course pathway – for students, including practitioners, wanting to learn more about criminology and criminal justice and how criminal justice works round the world;
- The research training pathway – for students likely to wish to move on to a research degree, such as a PhD;
- The restorative justice pathway – for practitioners, researchers and students who already have at least some knowledge or experience of restorative justice and who wish to develop this further.

All students start in the first semester with the core modules for the degree and the choice between pathways can be made when students arrive in Sheffield. Our aim is to make this a truly international programme, so we welcome students from the EU and overseas, as well as those who have recently studied in the UK. The programme will also be of interest to criminal justice and restorative justice practitioners and policy-makers who may wish to deepen their knowledge and understanding of recent international developments in the fields of criminology, criminal justice and restorative justice.



Former MAIC students have gone on to be researchers for government departments, or are now university academics. Others are practitioners in criminal justice, both in the UK and abroad. One recent former criminology student has found work within the United Nations.

Research Degrees

The School of Law is widely respected for its academic reputation. Research supervisors are known internationally for their research in many areas of legal and criminological study. Many have been involved in informing policy processes through research and advisory work for government departments, public agencies and regional, national and international bodies.

We pride ourselves in the support and guidance we offer our research students. Research students have access to their own research office space, with a workstation, printer access and secure storage. We provide a support structure that includes supervisors, research directors and support staff.

Our students meet regularly through their monthly research colloquia, social activities and their shared use of research student facilities in the School of Law. Our students are part of the School's wider research community, but also are part of a supportive community of their own.

Students initially register for the degree of MPhil and then transfer to PhD status subject to satisfactory progress. It is also possible to do an LLM by research.



The Centre for Criminological Research

To be a postgraduate student in criminology at this University is to benefit from the internationally regarded expertise of staff within the Faculty, particularly from the Centre for Criminological Research (CCR). The Centre is one of the largest criminology and criminal justice research centres in the UK and has strong international links with research centres and criminal justice organisations across the world. It is, for example, the UK lead member for GERN, the *Groupe Européen de Recherche sur les Normativités*, the key European research network of some 40 university research centres and research institutes.

Research projects within CCR span most areas in criminological and criminal justice research, with members collaborating across disciplines, as well as undertaking excellent research of the highest international quality within disciplines.

The Centre for Criminological Research reaches across other departments and faculties within the University and conducts high quality research funded by research councils, national government departments and international bodies. Members from the School of Law are:

Director: Professor Stephen Farrall	Dr Claire McGourlay
Professor Estella Baker	Dr Camilla Priede
Honorary Professor Sir Anthony Bottoms	Dr Gwen Robinson
Dr Andrew Costello	Dr Natasha Semmens
Dr Matthew Hall	Professor Joanna Shapland
Emeritus Professor Simon Holdaway	Dr Gilly Sharpe
Dr Ben Hunter	Carolyn Shelbourn
	Dr Layla Skinns
	Dr Angela Sorsby
	Dr Maggie Wykes

