

A legacy to Sheffield

A generous bequest to the University from Dr Marjorie Shaw is enabling our undergraduates to study abroad.



Dr Marjorie Shaw

With your help we can continue to promote excellence, diversity and opportunity.

Dr Shaw, a lecturer in French Language for over 30 years, died in 2000 and left a gift of £150,000 to her old department. "Her life was devoted to undergraduate students," said colleague and friend Professor David Williams. Her gift was made without conditions, enabling the Department of French to decide the most effective way to use the legacy.

The gift has been translated into bursaries to help students who find themselves in need of financial support. Each Dr Marjorie Shaw Bursary, worth £1,000, will support a student during their study year abroad, a crucial part of the French undergraduate degree.

Dr Shaw's long and successful career at the University, including her close association with Tapton and Halifax Halls of Residence, has given many hundreds of alumni good cause to remember her with gratitude. David Bradshaw OBE, one of her very first students in 1947, remembers her with great respect and fondness. He recalls "a

strong impression of her presence, energy, love of the French language and enthusiasm for teaching it."

By leaving a gift to the University, Dr Marjorie Shaw has ensured that her positive influence will continue.

The Development and Alumni Relations Office is here to provide advice for alumni who wish to make a gift or leave a legacy in their Will to the University.



The first Dr Marjorie Shaw Bursary holders: (left-right) Dale Meath, Rick Webb, Danielle Fortier and Jennifer Hutchinson
Photo: Miriam Garner

To request a copy of our Legacy Brochure or for further information about supporting the University, please contact:

Miles Stevenson
Director of Development
Development and Alumni Relations Office
The University of Sheffield
277 Glossop Road
Sheffield
S10 2HB

Tel: +44 (0)114 222 1071
Fax: +44 (0)114 222 1044

Email: miles.stevenson@sheffield.ac.uk
Website: www.sheffield.ac.uk/alumni



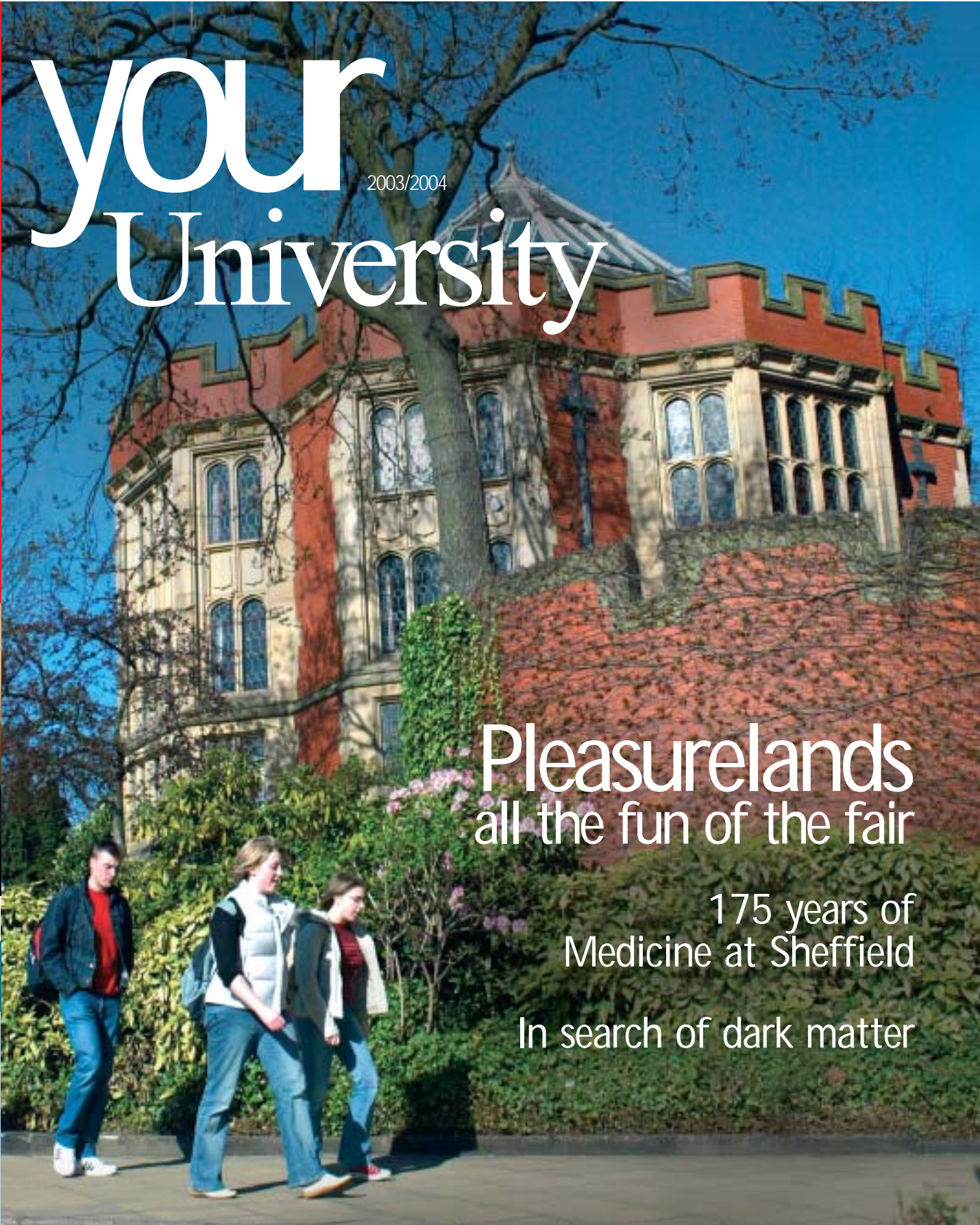
your University

2003/2004

Pleasurelands
all the fun of the fair

175 years of
Medicine at Sheffield

In search of dark matter



The magazine for alumni and friends of
The University of Sheffield



The University
of Sheffield

your alumni travel programme



The University of Sheffield, in association with Collette Worldwide Holidays, presents an exciting, specially-selected range of tours for Sheffield alumni and their travelling companions.

Discover Switzerland

Departing 8 July 2004 7 days

Twin: £899 per person Single: £999

Collette offers you the opportunity to relax and enjoy the beauty, charm and history of Switzerland. Our base is the medieval city of Berne and our home for the week is the four-star Hotel Bristol. Day trips include the shores of Lake Geneva and the Castle of Chillon, Montreux, Interlaken, Grindelwald and Lucerne. Highlights include a ride on the Panoramic Express Train from Montreux to Gstaad and insightful guided tours of Berne and Lucerne. You will also have plenty of free time to explore on your own and experience the local fine food and wines.

Flights are available from Edinburgh, Glasgow, Newcastle, Manchester or Birmingham at no extra cost.

For full details, call Collette Worldwide Holidays on freephone 0800 092 1888, quoting 'Sheffield Alumni HE'.



Photo: www.swiss-image.ch



Canadian Rockies Highlights

featuring the Rocky Mountaineer Train

Departing 3 October 2004 10 days

Twin: £1,599 per person Single: £1,849

Experience the magnificence of the Canadian Rockies. This trip combines fabulous hotels and stunning scenery. We start in Calgary and then travel to the heart of the Rockies with two nights at the Chateau Lake Louise. Spend a night at the Banff Springs Hotel before heading into the heart of the Rockies aboard the Rocky Mountaineer Train for a two-day journey. With an overnight stop at Kamloops, you will spend two days viewing coastal forests, roaring rivers and lofty mountain peaks. We finish with a two-night stay in Vancouver and an optional day trip to Victoria Island to see Butchart Gardens.

Flights are available from Edinburgh, Glasgow, Manchester or Leeds/Bradford at just £60 extra.

For full details, call Collette Worldwide Holidays on freephone 0800 092 1888, quoting 'Sheffield Alumni RL'.

China & the Yangtze River Cruise

including Shanghai, Guilin, Xian, Beijing and Hong Kong

March 2005 18 days

Twin: £2,599 per person Single: £3,349

Experience the culture and history, the sights and sounds of China. Begin in Shanghai with the famous Bund and Art Deco buildings. Next is a five-day cruise on the Yangtze including a tour of the Three Gorges Dam Site. We then travel to Guilin and take a relaxing boat trip on the River Li. At Xian, we visit the fascinating Terracotta Warriors. On to Beijing, seeing the Forbidden City, Tiananmen Square and Summer Palace. Experience the Great Wall. Finally we visit Hong Kong, with a farewell dinner at the Café Deco overlooking the harbour.

Flights are available from Glasgow, Newcastle, Manchester, Birmingham or Southampton at no extra cost.

For full details, call Collette Worldwide Holidays on freephone 0800 092 1888, quoting 'Sheffield Alumni CL'.



All holidays are operated by Collette Worldwide Holidays, ATOL 4832, and include round trip air from London, hotel transfers and departure tax.



The Development and Alumni Relations team (left-right Andy, Miriam, Helen, Ruth, Miles, Kevin)
Photo: Bridget Hannon

WELCOME to the first issue of your annual alumni magazine, *Your University*

Your University, produced by the new Development and Alumni Relations team at the University of Sheffield, aims to keep you informed about, and involved in, the life and work of your University.

Whether you graduated recently or many years ago, we hope you'll enjoy reading about what's happening at the University today – from academic and research achievements to the renowned student life, from the development of new buildings and facilities on campus to plans for the future.

Here at the Development and Alumni Relations Office, our role is to help you stay connected with your University and your fellow alumni around the world. We also offer you a range of alumni benefits and services. Whether you'd like to reconnect with old friends, use University facilities, benefit from discount offers or find out about supporting your University financially, we're here to help.

We'd love to hear what you think about this magazine, and we welcome your suggestions for new services to alumni. Please do complete and return our questionnaire so that we can keep our records up-to-date. Or you can update your details online at www.sheffield.ac.uk/alumni.

Since the office was set up a year ago, we've spoken to many alumni and have been delighted by their affection for the University. We hope that you, too, are proud to be part of the network of Sheffield alumni and will want to stay in touch.

No matter where you are in the world, Sheffield is still *Your University*.

Miles Stevenson
Director of Development

Development and Alumni Relations Office,
The University of Sheffield, 277 Glossop Road, Sheffield, S10 2HB

Tel: +44 (0)114 222 1071
Fax: +44 (0)114 222 1044
Email: development@sheffield.ac.uk
Website: www.sheffield.ac.uk/alumni

contents

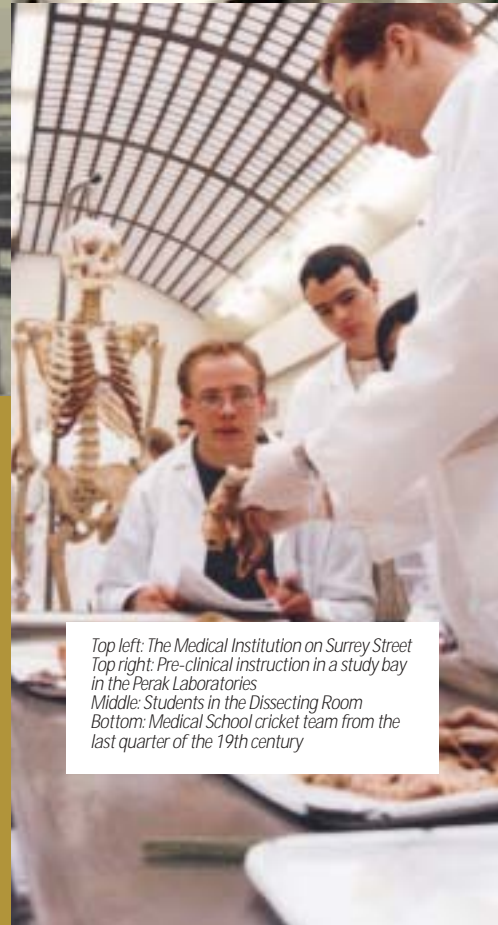
175 years of Medicine at Sheffield	2
Your news	6
Pleasurelands	8
The Alumni Foundation	10
Old friends – new technology	12
What makes a Vice-Chancellor tick?	13
U Sport – top of the league	14
Your news	16
Filming the conquest of Everest	18
Sheffield's green and pleasant land	20
People in the news	22
In search of dark matter	24
Your news	26
Centenary 2005	28
Giving something back	30
The global perspective	32
Honours and awards	34
Convocation	37

Editor Kate Horton Public Relations
Design The Bright Partnership Ltd
Cover photograph The Edgar Allen Building, the first purpose-built university library in the country, was opened in 1909 and is named after its generous benefactor, William Edgar Allen, who donated £10,000 for its construction. It now houses administrative offices.
Thank you to Ian Spooner, of the University's Public Relations Office, for this and many other photographs used in this magazine.

Advertisements are carefully vetted, but the University can take no responsibility for them.

©The University of Sheffield 2003

175 years of Medicine at Sheffield



Top left: The Medical Institution on Surrey Street
Top right: Pre-clinical instruction in a study bay
in the Perak Laboratories
Middle: Students in the Dissecting Room
Bottom: Medical School cricket team from the
last quarter of the 19th century



Professor Tony Weetman, Dean of the School of Medicine and Biomedical Sciences, reflects on the development of Medicine at Sheffield.



Approaching the entrance of the Medical School by the Royal Hallamshire Hospital, the curious observer will notice some old carved stone letters – *Ars Longa Vita Brevis* – set into a low wall. This Latin inscription, meaning “The art is long, life is short”, was once above the entrance to the original Medical School in Surrey Street. It provides a direct link back to the start of the formal study of Medicine in Sheffield in 1828.

This year the University is celebrating 175 years of Medicine at Sheffield. Changes over these years have, of course, been dramatic and our teaching methods and research will certainly continue to develop at an ever-increasing pace. A milestone such as this provides an opportunity to reflect on what has been achieved and to plan for the future.

The roots of the Sheffield Medical School began early in the 19th century with two rival medical schools. In 1828, through the generosity of subscribers, The Medical Institution in Surrey Street was established with a library and a programme of regular lectures. During the next 50 years it became apparent that the School had to expand and provide specialist courses. In 1883, a fundraising appeal was launched to raise £5,000 to incorporate the School with the newly created Firth College.

When the University of Sheffield opened in 1905, Medicine was one of 11 subjects available at the new buildings on Western Bank. One of the first decisions taken by the Faculty of Medicine was to admit female medical students, a move not made by some older universities until much later. The total intake for degree and diploma courses in 1905 was only 114 students, of whom 38 were studying Medicine. The Medical School still possesses the first register, which includes details of Sheffield's first female medical students – Lydia Manley Henry and Florence Elizabeth Millard. Another early graduate was William Barnsley Allen (MB ChB 1914), who was the first Sheffield citizen to win the Victoria Cross.

The last century witnessed several landmark medical discoveries by both staff and alumni, including two Nobel Prize-winners. Sir Hans Krebs, Professor of Biochemistry, for his explanation of the pathway of energy production in cells – the Krebs Cycle – in 1953; and Chemistry graduate Dr Richard Roberts (BSc 1965, PhD 1968) for his discovery of split genes in 1993, which has revolutionised genetics. Dr Roberts disproved the long-held theory that genes in plants and animals are made up of continuous segments of DNA. This finding has important biological, medical and evolutionary consequences. Another Nobel Laureate with strong Sheffield connections is former Professor of Pathology, Lord Howard of Florey, who was jointly awarded the prize in 1945 for his work on the isolation and application of penicillin.

The appointment of Dr (later Sir) Edward Mellanby as Professor of Pharmacology in 1920 was of great significance. It was the first time that a full-time professor had been a member of staff at one of the teaching hospitals. Mellanby had his own clinical wards for his patients at the Royal Infirmary and, thus, Sheffield became one of the first English universities to institute a full-time clinical chair. Mellanby's discovery of vitamin D deficiency as the cause of rickets led directly to the eradication of this disease. After he left Sheffield, he became head of the Medical Research Council from 1933 to 1949.

Today's Medical School is associated with the Sheffield Teaching Hospitals Trust, serving a population of nearly half a million, and has close links with Sheffield Children's Hospital and many surrounding NHS

Win a luxurious break for two in the Peak District

Complete and return our alumni questionnaire by 30 NOVEMBER 2003 (either by post or online at www.sheffield.ac.uk/alumni) and your name will be entered in a draw to win a break for two at the Cavendish Hotel in Derbyshire.



Located in Baslow, on the Chatsworth Estate, the Cavendish Hotel was originally owned by the Duke of Rutland, until it became the Duke of Devonshire's property around 1830. It was rebuilt in the 1970s by the Chatsworth Estate when the original character was preserved. The Duchess of Devonshire selected the decor and furnishings, some of which came from Chatsworth House itself.

The Cavendish Hotel houses 23 en-suite bedrooms. All rooms overlook the Chatsworth Estate and are luxuriously appointed with twin or double beds, direct-dial phone, television, hairdryer, refrigerated bar and beverage facility. The Cavendish's facilities also include the renowned Cavendish Restaurant, a board room and private dining room for segregated meetings and a putting green. For more information about the hotel, please visit www.cavendish-hotel.net

The Cavendish's sister hotel is the **George Hotel** in Hathersage (www.george-hotel.net), which dates from the 14th century. One of its most distinguished visitors was Charlotte Brontë, who was so enchanted by Hathersage that she used it and its characters as a model for *Jane Eyre*, naming the book's heroine after the Eyre family who previously owned The George.



Hospital Sunday, 1920. Medical students are seen raising money for the hospitals, particularly to combat Tuberculosis, as part of the Medical School's first RAG



Margaret Hodge MBE MP, Minister of State for Children, looking on as a local Year 9 student takes part in a clinical skills exercise

"The development of the Medical School is at the heart of the University's strategic plan."

Trusts. In the most recent national Research Assessment Exercise, the School achieved an overall score of 5 for hospital-based medicine, with the Inflammation, Infection and Immunity group receiving the highest possible rating of 5*.

Throughout the Medical School, research of international importance is taking place in many fields. Examples include work on von Willebrand's disease, the most common bleeding disorder in humans, coronary artery disease, which leads to heart attacks, and motor neurone disease. Sheffield is one of the world's leading centres for research into osteoporosis, the disease which reduces the density and quality of bone, leading to weakness of the skeleton. It affects one in three women over the age of 50. The University is the focal point for prostate cancer research in the UK. Prostate cancer is the second most common cancer in men after lung cancer, with over 21,700 new cases and approximately 9,000 deaths in the UK every year. Nationally, Sheffield receives almost a third of all prostate cancer funding, the largest proportion for any UK city.

Plans for the future include a total refurbishment of all research facilities in the Medical School and the co-location of all basic science research onto one site, adjacent to the

Royal Hallamshire Hospital. Part of this initiative is being funded by generous legacy gifts left by former students and grateful patients in their Wills. Philanthropic gifts have played a notable role in the history of the Medical School since its foundation and will continue to do so in the future.

The development of the Medical School is at the heart of the University's strategic plan. There are ambitious plans to ensure that, by 2006, the School is a truly international centre of excellence for medical research and education. To reach this goal, my colleagues and I would welcome the involvement and support of our alumni, many of whom care deeply about the Medical School and its future.

Widening Participation

Sheffield has pioneered a programme to make a career in Medicine possible for able students from all backgrounds. Sheffield's Outreach and Access to Medicine Scheme (SOAMS) is a partnership venture with 82 local schools and colleges. It encourages students from backgrounds under-represented in the medical professions to aspire to study Medicine at university. It provides Years 9-13 school pupils with coaching and guidance to help them succeed and with support while they are at the University.

yourreunion

Medical Reunion and Open Day

Thousands of students have come through the doors of the Medical School and gone on to practise Medicine throughout the world. We want to re-establish contact with our medical alumni and in the spring of 2004 are planning to hold a major reunion and open day.

So that we can let you know more, please make sure we have your up-to-date contact details by filling in a questionnaire at: www.sheffield.ac.uk/alumni

IT's a fantastic opportunity with Viglen and the Sheffield Alumni Programme

Viglen and the University of Sheffield Alumni Programme are proud to offer you fantastic discount prices on a range of desktops, notebooks and upgrades.

Would you like to get your work done faster? | Want more time for fun? | With your own PC you have the freedom to work when you want | Not only will we make sure you get the right solution, we will also make IT easier on your pocket! | IT's as simple as that | Viglen and the University Alumni Programme, together we can make IT happen |

"Viglen has been a major supplier of PCs to the University of Sheffield for over 15 years, during which time they have provided many thousands of computers. They have always provided quality computing equipment with a flexible approach. On-site maintenance support is very good and we are fortunate in having plenty of their engineers in the Sheffield area"
Peter Armstrong, Team Leader - PC Procurement - The University of Sheffield.



For information on the great discounted offers available to you, go to www.viglen.co.uk/specialoffers/sheffield or contact the Education Sales Team on 08705 386 386, quoting ST015-S

Tel 08705 386 386 Email education@viglen.co.uk Web www.viglen.co.uk



The Vice-Chancellor, Professor Bob Boucher, and Alan Walker, Professor of Social Policy (left), receive the medal and scroll from Her Majesty the Queen and Prince Philip

Third Queen's Anniversary Prize



PIONEERING RESEARCH aimed at improving the quality of life of older people has gained the University a third Queen's Anniversary Prize, one of the UK's most prestigious educational awards. Part of the national honours system, the biennial Prize scheme recognises outstanding achievement by UK universities and colleges in areas that benefit both the institution and the nation as a whole.

The winning bid addresses key health and social care issues arising for older people. These include the introduction of new techniques for the diagnosis and treatment of osteoporosis; developing new

approaches to the care of people who are terminally ill or suffering long-term illness; understanding the causes of homelessness in older people; raising the effectiveness of the care of older people in hospitals, nursing homes and domestic residences; investigating the impact of social and economic policies on older people; and improving rehabilitation therapies, services and outcomes.

The Vice-Chancellor, Professor Bob Boucher, commented: "Our work in this field is having a real impact on public policy, leading to improved services for older people, both in this country and abroad.

The importance of this research can be linked to the fact that within five years there will be more pensioners in the population than people under the age of 17, for the first time in British history."

Sheffield is one of the few universities to have won the Prize on more than two occasions. The winning entry in 1998 described the pioneering work by the Humanities Research Institute in creating electronic editions of literary texts and historical manuscripts; in 2000, its successful bid focused on the protection of underground water supplies and the safe incineration of waste materials.

Boeing and Sheffield at the competitive edge

BOEING, THE WORLD'S LARGEST MANUFACTURER OF SATELLITES, commercial jetliners and military aircraft, has forged strong links with the University's Advanced Manufacturing Research Centre. The Centre, which capitalises on the Faculty of Engineering's expertise in metals and cutting technology, is now a focal point of Boeing's UK aerospace research.

The key role of the Centre is to develop innovative processes for the machining and structural analysis of titanium and other novel materials for aerospace applications. This is a crucial area of research as the aerospace industry strives to find lighter materials to improve the efficiency of both commercial and military aircraft.

Established on a site adjacent to Sheffield City Airport, the Centre is the hub of Yorkshire Forward's pioneering Advanced Manufacturing

Park – Yorkshire and Humber's high-tech site for advanced engineering and metals. Acting as a catalyst, the Centre is attracting a cluster of aerospace manufacturers and suppliers, creating a world-class community where new technologies and products are developed for the market-place.

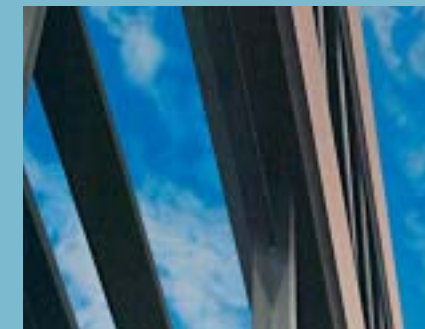
The University's special relationship with Boeing stands alongside its other major aerospace collaborations, in the form of two Rolls-Royce University Technology Centres and a BAE Systems/Rolls-Royce University Technology Partnership.

The Aerospace Engineering Programme at the University brings together the expertise of five engineering departments to provide a forward-looking approach aimed at solving the aerospace problems of the future.

Blue sky University

A STRIKING NEW PAINTING of the University Library has been created by Professor Brendan Neiland RA, Keeper of the Royal Academy of Arts. *Rerum Cognoscere Causas* captures the spirit of the University as he experienced it and now hangs in the building it represents.

The title of the painting is the motto of the University and means 'To Discover the Causes of Things' (from Virgil's *Georgics II*, #490).



Rerum Cognoscere Causas (detail) by Professor Brendan Neiland



Dr Williams (left) with the Vice-Chancellor. Photo: Miriam Garner

Alumni view Summer Exhibition

A SPECIAL EVENT FOR ALUMNI was held at the Summer Exhibition at the Royal Academy in London. The Vice-Chancellor is seen here with Dr Peter Williams (BSc 1973, PhD 1978), Group President and Chief Operating Officer for Danka's European Operating Group.

Annual research income rockets

THE UNIVERSITY'S research income for 2001/2002 amounted to £99.7 million, a 61 per cent increase on the previous year. The figures confirm Sheffield's status as one of the UK's top research-led universities. In the official 2001 Research Assessment Exercise, 73 per cent (35 out of 48) of the University's research subject areas were ranked in the top two grades, 5 and 5*, which indicates that the research achieves international standards of excellence.

Major boost to metals research

IMPETUS, the Institute for Microstructural and Mechanical Process Engineering, has been awarded a substantial funding package, worth almost £4 million, from the Engineering and Physical Sciences Research Council. IMPETUS uses sophisticated analysis of the effects of heat and force on materials to create computer models that can predict how new materials and products will behave, right down to the atomic level.

Leading the way in widening participation

THE UNIVERSITY is committed to widening participation in higher education. The latest performance indicators published by the Government have delivered a vote of confidence in its strategy. The percentage of state school students in its intake in 2000/2001 was 83 per cent, highest of all the Russell Group of leading universities, six per cent above its benchmark and 30 per cent higher than both Oxford and Cambridge. The drop-out rate of young first degree students not continuing their studies after year one, is just two per cent – a result bettered by only two universities.

The first major touring exhibition of fairground memorabilia to be organised in the UK will open in Sheffield. The National Fairground Archive, housed in the University Library, is a major contributor to the story.



Pleasurelands

the magical, topsy-turvy world of the fairground

The fairground has long been a part of popular culture and every weekend, from Easter to October, over 200 fairs still take place in the UK. The tradition is living and dynamic, with a history stretching back 800 years. Indeed, a fair often predates the town or settlement in which it operates. Many of the technological advances of the past 150 years were first exploited by travelling showmen for commercial gain. They were responsible for innovations in entertainment such as the cinema and the widespread use of electricity: always something new and exciting to draw the punters in.

Behind all the spectacle and illusion are the lives of the showpeople themselves. At odds with the popular romantic perception of the fairground, the working fair is bound by a strong sense of tradition and respectability within a highly organised community. Someone who knows this better than most is Dr Vanessa Toulmin, founder and research director of the National Fairground Archive and herself a member of a show family.

Vanessa completed an Archaeology degree at the University in 1988 and in 1993 returned to start a PhD on the history of travelling showpeople. She soon realised that "there was no record or repository relating to any aspect of the tradition and culture that I had grown up with and which was also part of the social fabric of the UK". The idea for an Archive arose from discussions with the Fairground Association of Great Britain and the Showmen's Guild of Great Britain. Vanessa was already collecting together photographs and material for her research, and storage was becoming a problem. Negotiations with the University Library resulted in the formation of the National Fairground Archive in 1994. Vanessa completed her PhD in 1997 and in the same year was awarded the Chancellor's Medal for her work with the Archive.

The Archive is now a unique collection of photographic, printed, manuscript and audiovisual material covering all aspects of the culture of travelling showpeople: their organisation as a community, their social history and everyday life, and the artefacts and machinery of fairgrounds. The Archive has a dual purpose. Firstly, it collects and preserves the history of popular entertainment found on travelling fairs; and secondly, it acts as an archival repository for today's travelling showpeople. Items are acquired on a donation or loan system only. Vanessa's access to the show community has enabled her to collect material, both historical and contemporary, from a wide

"a world where reality is suspended, where visitors shed inhibition and indulge their fantasies"

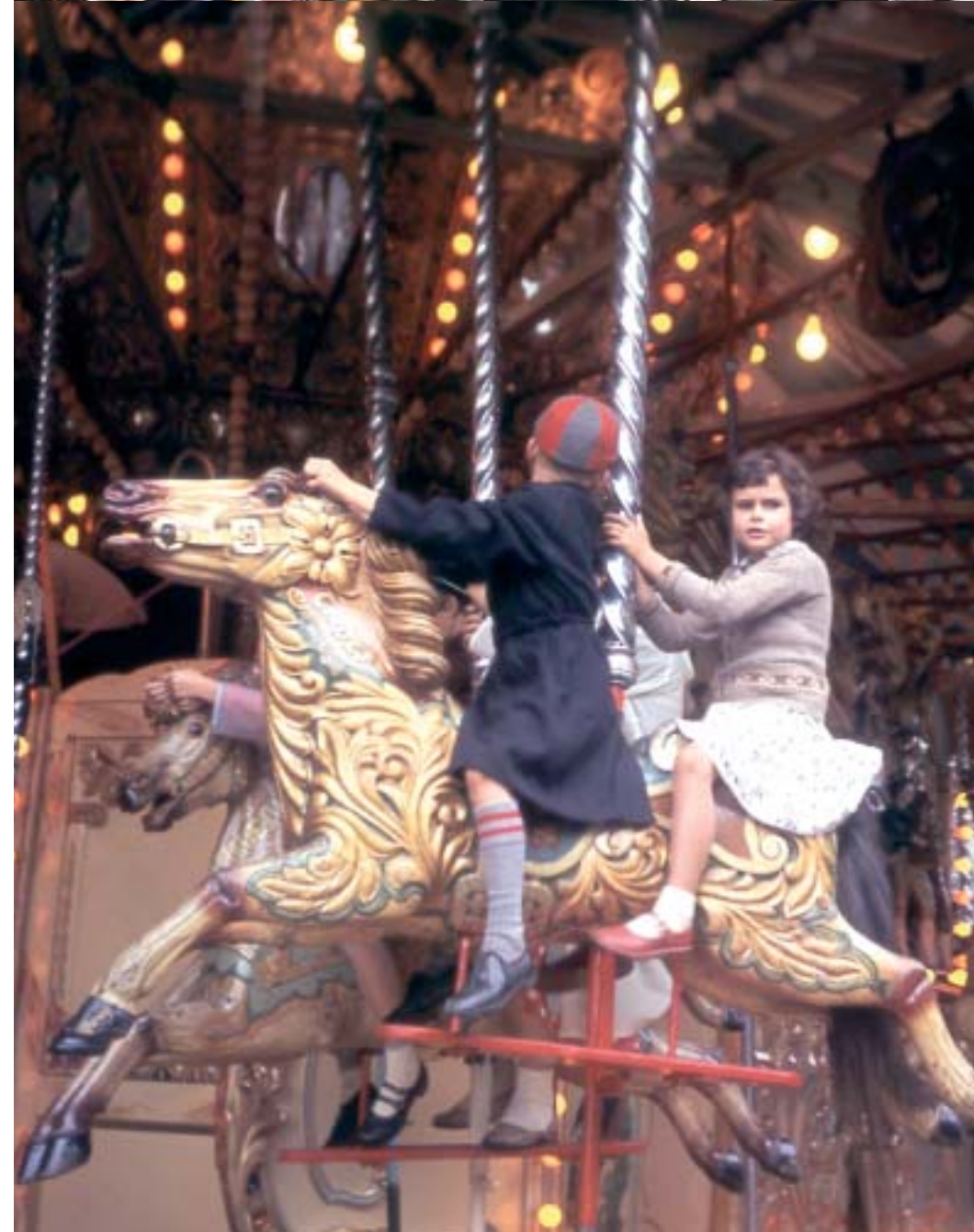
range of sources, including individuals and the national associations linked to the fairground.

All types of fairs are covered, including charter and prescriptive fairs such as Hull and Nottingham, wakes holidays in the North of England, mop and hiring fairs in the Midlands, and private business events attended by the showpeople in association with a local fête or gala. A strength of the Archive is the depth of material relating to fairground families. One of the principal holdings comprises photographic material of the Shufflebottom family, donated by Margaret Bird, Florence Campbell and Maisie Smith, who were all members of the famous Wild West family. The collection dates from 1890 to the 1960s and covers three generations

of the family shows, including the founder, Texas Bill Shufflebottom, a Buffalo Bill impersonator from Yorkshire who masqueraded as the great American showman.

This family is featured in the *Pleasurelands* exhibition, a project developed by Kim Streets, Curator of Social History at the Sheffield Galleries and Museums Trust, in partnership with Croydon Museum and Heritage Service and in consultation with the Archive. The scale and scope of the exhibition has encouraged many private collectors to become involved. This has been especially important where the three-dimensional items are concerned, as these do not tend to find their way into public collections. Many rare and unusual articles will provide a colourful, contrasting and multi-sensory display, including decorative panels, carved animals, costumes, photographs, archive film and music. Highlights include carved wooden horses from a Vosper ride of the 1840s, films from the Shufflebottom collection and the story of Billy Bellhouse, the Sheffield Wall of Death rider.

The exhibition investigates a world where reality is suspended, where visitors shed inhibition and indulge their fantasies. The fairground is a real melting-pot, where people from all classes come together to experience illusions, thrills and magic. Memories and anecdotes about real events from generations of fun-seekers will bring the displays to life. The role of technology and innovation in the creation of the spectacle will also be investigated. In addition, the exhibition challenges widely-held perceptions of showpeople and their way of life. This is also a major theme behind the work of the Archive. As Vanessa says: "We are seeking to widen public understanding of travelling showpeople by creating greater access to what has historically been a closed community."



Pleasurelands

1 Oct 2003-18 Jan 2004
Millennium Galleries,
Arundel Gate, Sheffield

24 Apr-5 Sept 2004
Croydon Clocktower,
Katherine Street, Croydon

9 Oct 2004-17 Jan 2005
City Arts Centre, Market
Street, Edinburgh

Please check with venues
for full details.

A catalogue, written by Dr Vanessa Toulmin, accompanies the exhibition. It has been sponsored by the Showmen's Guild of Great Britain, the Fairground Association of Great Britain and the University of Sheffield's Alumni Foundation. Published by The Projection Box, it costs £10.00.

An exhibition entitled *Carousel: The Fairground and Circus in Art* will be on display at: Graves Art Gallery, Surrey Street, Sheffield, 15 Nov 2003-7 Feb 2004

National Fairground Archive

To find out more about the Archive or to make arrangements to access the collections, please contact:

Dr Vanessa Toulmin
Research Director
National Fairground Archive
The University of Sheffield
Sheffield, S10 2TN

Tel: 0114 222 7231
Fax: 0114 222 7299

Email:
fairground@sheffield.ac.uk
www.sheffield.ac.uk/uni/nfa

Page 8: Texas Bill Shufflebottom and his wife Rosina, 1890

Page 9 (clockwise, from top left): View of Nottingham Goose Fair, 1999, Vanessa Toulmin

*Alf Testa's Monkey Show, Hull, 1957
Children on Gallopers at Oxford St Giles Fair, 1958, Lionel Bathe*



Top left and left:
Two of the recipients of
Opportunity Bursaries
2003/2004 – Luke
Richardson (Architecture)
and Jenna Ostrowski (Law)
Photos: Ruth Stanley
Top right: The Yorkshire
Region Novice Foil event

The Alumni Foundation

If someone had given you £500 when you were a student, how would you have felt? Whatever you used it for – perhaps books or rent – it would undoubtedly have made a significant difference to your life at the University of Sheffield. And ‘making a difference’ is the philosophy behind the University’s Alumni Foundation.

Launched in 1989, the Alumni Foundation exists to channel donations from past Sheffield students to provide direct help for current students in a variety of ways. Gifts from alumni have helped to fund scholarships and bursaries, student services and facilities, and musical, sporting, dramatic and cultural projects.

To direct gifts and donations to areas of need, the Alumni Foundation has a grant-making committee, comprising alumni, staff and

current students. Grants are usually between £500 and £2,000, but consideration is given to larger projects.

As you will see from the following success stories, the Alumni Foundation is an example of how relatively small donations can make large and immediate differences to the lives of Sheffield students. We are extremely grateful to all our past donors and hope that you will enjoy reading what has been achieved through your generosity.

your foundation

To find out more or to make a donation, please visit www.sheffield.ac.uk/alumni/foundation or contact Ruth Stanley, Development Manager
Tel: 0114 222 1075 Email: r.e.stanley@sheffield.ac.uk

New IT centre for Sorby

A new 24-hour IT centre at Sorby Hall of Residence will help to meet the ever-increasing demand for student computer facilities. A grant of £10,000 from the Alumni Foundation is a significant contribution to the project. The centre has 70 workstations, a team of technical staff, a small workshop for minor software repairs and a café called *Jazzman*, the first of a new chain to open in the UK. There are currently 1,385 open-access PCs for student use around campus. The Sorby centre will ease congestion in some of the more popular sites, whilst providing a safe, accessible late-night service.

Opportunity Bursaries

Today’s students face many financial pressures and one of the Alumni Foundation’s foremost aims is to help alleviate hardship. This year, the Foundation selected one student from each of the seven Faculties to receive a £1,000 Opportunity Bursary for the 2003/2004 session. These bursaries will make a huge difference to the lives of the recipients, from helping them to buy books and materials to easing the burden of public sector rents.

A new approach to counselling

A grant of £1,500 from the Alumni Foundation has enabled the University Counselling Service to set up a series of group workshops, aimed at students who prefer an alternative to one-to-one counselling. The four workshops are Increasing Confidence, Drop-In Relaxation Sessions, Better Relationships, and Looking Up When You’re Feeling Down.

The cut and thrust of competition

An Alumni Foundation grant of £300 has helped the Sheffield University Fencing Club to revive the Yorkshire Region Novice Foil event. The competition was a great success, attracting 49 fencers ranging in age from nine to 43. It even made a small profit, which has been put towards new kit and the organisation of next year’s competition.

First for Sheffield at Model United Nations

This year saw the first delegation of students from the University of Sheffield take part in the Model United Nations Conference in Heidelberg, thanks to a £720 Alumni Foundation grant. The 12-strong team included

students of different nationalities from a range of courses. They joined over 900 participants from around the globe to engage in debates and resolution-writing for various committees, such as the International Court of Justice and the UN Development Programme. Four of Sheffield’s students won awards for debating.

The team agreed that the experience had been a unique opportunity to raise global awareness and foster international relations, especially as the conference was taking place shortly after the outbreak of hostilities in Iraq. Charles Lewis, a Master’s student in Electronic Journalism, said: “The spirit of global togetherness was unforgettable.”

Supporting Nightline

Nightline is the Union of Students’ confidential telephone listening and information service, which operates every night during term time. A grant of £300 from the Alumni Foundation has enabled the service to publicise its activities across the University. Pens printed with the *Nightline* logo and telephone number were distributed around campus during exam time.

Friends united



Roy Jeans (left) and Rick Turner

PSYCHOLOGY graduate Dr Rick Turner (BSc 1979) is just one of thousands of former students who are still enjoying the friendships they made in Sheffield. Rick moved to the USA in 1987 and has made a successful career, based on his research into the effects of stress on the cardiovascular system. He has now applied his expertise in the pharmaceutical industry.

Rick has not been back to Sheffield for 10 years, but has always found a way to maintain his University friendships. In an email to the University, Rick said: "I would like to acknowledge one particularly meaningful relationship born during my first weeks in Sheffield. I met my friend Roy Jeans (BA 1979) in the lounge at Ranmoor Hall, and have kept in close touch ever since. He married another University graduate, Lia Marini (BA 1979), and they were kind enough to invite me to be a godparent to their first child, Gabriella. Even though they live in London, my friendship with Roy and Lia's family continues to enrich my life enormously. I'm sure that all of you reading this article can think of similar friendships – our time in Sheffield has had a truly special influence on our lives."

Old friends – new technology

www.sheffield.ac.uk/alumni

The network of Sheffield alumni is based on strong friendships made at university.



One of the most important and popular services that the University of Sheffield provides for its alumni is the opportunity to re-establish contact with old friends.

Work has now begun to develop the alumni website to make it even easier for you to seek out lost friends and make contact again. By Christmas we hope to have upgraded the existing Guestbook facility – where you can leave a message and search other visitors' messages – into an Alumni Directory.

In this new password-protected area of the website, visitors will be able to access an online directory of alumni information, and read messages left by other service users. Entries on the Alumni Directory will be fully searchable and when you find someone you would like to make

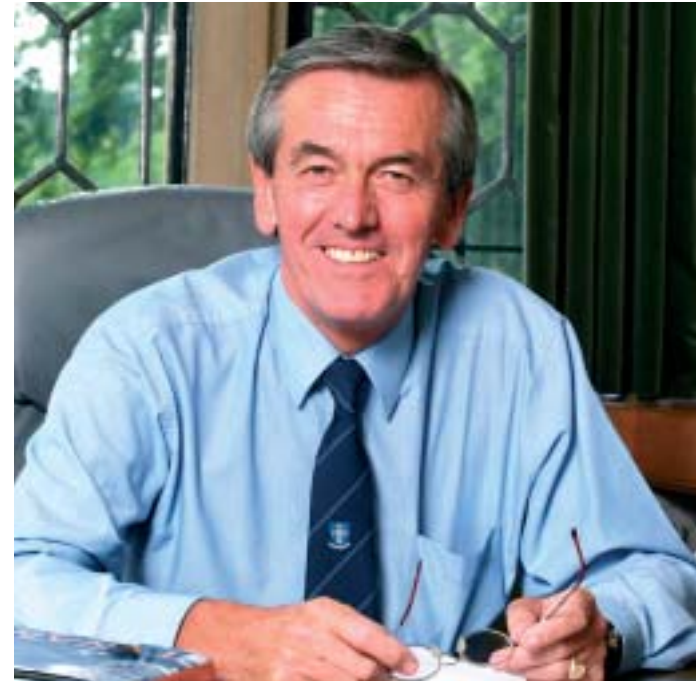
contact with, you will be able to send them an email.

If, however, you find that the friend you are looking for is not registered with the online directory, we may still be able to help you locate them. By filling in the online Find an Old Friend form, we can search our database and try to contact them on your behalf.

For reasons of privacy and data protection, we will not display or release any contact details. Emails will be sent by a secure system without displaying an address.

Other alumni services already featured on the website include details of alumni membership of Goodwin Sports Centre, library membership for alumni, and careers information for both graduates and employers.

If you would like to get in touch with friends from Sheffield, visit the alumni website – www.sheffield.ac.uk/alumni



The Vice-Chancellor, Professor Bob Boucher

What makes a Vice-Chancellor tick?

Jon Pyle, Head of Communications, interviewed Professor Bob Boucher to find out

What attracted you to return to Sheffield as Vice-Chancellor in 2001?

I'd seen how Sheffield had continued on the trajectory of improvement and success it was on before I left. So the attractions of leading a successful broad-based university, which Sheffield is, were combined with the chance to drive it on to even greater success. Of course, there's a personal component too. I know what a lovely city Sheffield is.

When the bicentenary history of the University comes to be written in 2105 how would you like your own legacy as VC to be seen?

I've already nailed my colours to the mast on this one! I'd like to think that the University had moved well on the way towards, and hopefully achieved, the goal of being the leading UK university outside the 'Golden Triangle' (Oxford, Cambridge and London).

I'd also like to think its contribution to the city's economic wellbeing would be recognised, thanks to our successes in spin-out businesses and attracting inward investment – the partnership with Boeing in our Advanced Manufacturing Research Centre is a good example.

There are clearly a lot of new-build and refurbishment projects going on, or in the pipeline. What's the thinking behind them?

High quality research can only be done by high quality people, and such people want a good working environment. With state-of-the-art facilities we can continue to attract truly the best researchers. The new buildings also equip us to do exciting new things, especially cross-disciplinary activities. A prime example is ICOSS (the Informatics Collaboratory for the Social Sciences). It will enable database expertise from Information Studies to join forces with our colleagues

in the social science community in evidence-based research across all the social sciences. We expect its work to have a big influence on national policy makers.

Why the big drive to strengthen the University's links with its alumni?

In the past we haven't kept in touch with our alumni as well as we should have. I have an emotional attachment to alumni. They've been part of the University community, part of the family, and I don't like the idea of not having contact with the family. I'm sure many alumni have warm feelings towards the University too and would like to have an association with us and maybe help us in some way in the future.

So how can alumni support the University?

Firstly, they can act as our ambassadors, speaking up for the University and the city of Sheffield. Secondly, universities are increasingly having to look to alternative sources of funding and, of course, I welcome the support of our alumni in that regard too. One effective way to help is via a donation to the Alumni Foundation.

I particularly want to develop a programme of scholarships and bursaries to alleviate student hardship. This is an area where even modest gifts will make a huge difference to individual students' lives, and we plan to contact our alumni to ask them to consider making a donation.

How would you like people to describe the typical 21st century University of Sheffield graduate?

I want our graduates to be noted for being innovative, entrepreneurial – and bright spirits in the workplace. So if people say that they noticed somebody doing a good, enterprising job in their company and found they'd come from the University of Sheffield – well, that's what I want to hear more and more of.

Finally, what's the most valuable lesson your experience of leading a top university has taught you about life?

Associate with good people because there's little in life you can do alone. Leadership is about achieving great things through people; so you need to get good people working for and with you.



An artist's impression of the Informatics Collaboratory for the Social Sciences at Portobello



U Sport – top of the league

your benefits

Sporting opportunities for alumni

Alumni are invited to make use of the outstanding facilities at the Goodwin Sports Centre.

Discounted monthly and annual memberships of the S10health fitness centre are available.

The S10health membership package includes the use of the fitness centre, fitness classes, swimming pool and pool-side sauna and steam rooms (proof of graduation required).

New for September 2003!

Sport facilities, fitness classes and swimming available on a Pay and Play basis – no membership required.

Membership enquiries:
Tel: 0114 222 6969

Check the website for further information: www.usport.co.uk

A £5.5 million investment in the Goodwin Sports Centre has provided fantastic sports facilities for the University community, the people of Sheffield and top regional sports stars. They received a top 5* rating in the *Sunday Times University Guide 2003*.

Sport has played an important part in student life at Sheffield for many years, starting when the playing fields at Norton were opened in 1910 and the pavilion built in 1928. The Goodwin Sports Centre opened to great acclaim in 1960, the result of generous donations from Sir Stuart and Lady Goodwin. The Centre went on to serve the University for over 30 years with little development, until a major review of the facilities took place in the early 1990s.

The University was justly proud of the Goodwin Sports Centre in 1960. The gymnasium could be adapted for physical training, indoor athletics, tennis, basketball, badminton, hockey, golf and cricket nets, indoor football, table tennis and fencing. The facilities were among the best in the country and were a major attraction to prospective students. The impressive 33-metre

swimming pool opened in 1963, the result of another generous gift from Sir Stuart and Lady Goodwin. It was re-named the Cofield Swimming Pool in 1967, to mark the retirement of 'Sarge' Cofield, the head of the Sports Centre.

At the time of the opening ceremony in 1960, the full-time student population stood at 3,000. Forty years later, the figure had risen dramatically to over 17,000. The growth in student numbers brought extreme pressures on the sports facilities and these were addressed by a University task force in 1992. One of the first steps was the replacement of the red shale surface on the Bramley Playing Fields by two floodlit synthetic turf pitches and a separate five-a-side pitch. These were ready for action in 1993.



Page 14: Fitness consultants provide advice and guidance to S10health members
Page 15 (clockwise, from top left): The synthetic turf pitches shortly after their completion in 1993; the Matrix Indoor Bouldering Wall; Tracey Baker with Richard Caborn, Minister for Sport, at the 2002 opening ceremony; hockey is just one of the sports played on the new synthetic pitches



This marked the beginning of a new era in sport at the University, the next stage of which was a multi-million pound redevelopment programme and the formation of U Sport. October 2002 saw the formal opening of the refurbished Goodwin Sports Centre by Richard Caborn, Minister for Sport and MP for Sheffield Central. The centrepiece of the new facilities is a large fitness centre – S10health – with 150 stations and dedicated physio and fitness testing rooms. Other new facilities include an aerobics studio, the Matrix Indoor Bouldering Wall (one of the largest bouldering walls of its kind in the country), a multi-purpose activity room and floodlit tennis courts, plus refurbished squash courts, sports hall and swimming pool (including new pool-side sauna and steam rooms).

"Sheffield is in the vanguard of UK universities in terms of sports provision"

In addition, the two existing synthetic turf pitches have been re-laid. They were joined in January 2003 by a third with a 'new generation' surface. The cost of installing the pitch was met in part by a grant of almost £300,000 from the Football Foundation, a funding partnership between the Government (Sport England and the National Lottery) and football (the Premier League). Local schools and community groups have access to the pitch and to training sessions hosted by the Football Association. Professional football clubs, including Sheffield Wednesday and Chesterfield, are also making use of the facility.

U Sport is making huge strides in sport development and is involved with local football partnerships through the Football Foundation Grass Roots scheme. On the

national scene, U Sport is supporting programmes such as Out of Reach and Active Sports, both aimed at encouraging participation in sport.

The Centre regularly hosts local, national and international events, including the National Malaysian Student Games and various Yorkshire hockey matches. National basketball teams – the Hatters and the Arrows – train at the site. Top sportspeople are involved in U Sport coaching programmes, including the Badminton Association and Sheffield's High Performance Volleyball squad. Budding British Olympians have free access to the facilities, via the British Olympic Passport Scheme.

A recent development is the relaunch of the University's Sport Bursary Scheme. During the 2002/2003 session, U Sport offered free access to its facilities to eight students who are competing at national and international level. Now, a grant of £2,500 from the University's Alumni Foundation has meant that funds are available on application to assist students in their pursuit of excellence. It is hoped that this grant will act as a catalyst for further donations.

The University is proud of its sporting facilities, which have been developed to meet the demands of the 21st century. "Sheffield is in the vanguard of UK universities in terms of sports provision," says Tracey Baker, Head of Sport. "We now have the capacity to open our doors to the wider community. I hope that our alumni will come and experience all that the Goodwin Sports Centre has to offer."

Rebuilding the monasteries of Yorkshire



A reconstruction of the abbey church at Roche from the west



The ruins of the abbey church at Roche, near Maltby, South Yorkshire. Photos: Cistercians in Yorkshire Project

DIGITAL TECHNOLOGY is bringing the 12th century monasteries of Yorkshire back to life, allowing visitors to see these historic sites in a way that has not been possible since the Middle Ages. The University's Humanities Research Institute is recreating the buildings and their communities for the age of the World Wide Web.

The Cistercians in Yorkshire Project team is designing a web-based learning package analysing the life, history and architecture of the Cistercian Order, focusing on five of the Yorkshire houses with significant standing ruins: Byland, Fountains, Kirkstall, Rievaulx and Roche. At the heart of the Project is a series of three-dimensional, virtual reality recreations of their abbey churches and monastic buildings.

The architecture of each site, explained in the context of other local churches (and European Cistercian abbeys), will open visual and textual windows onto the Cistercian way of life as experienced by the monks, the lay-brothers and their secular neighbours.

The Cistercians, or White Monks, played a major role in the religious and economic life of medieval England. Among the Yorkshire houses, Fountains and Rievaulx, both founded in 1132, are of notable importance and remain popular with visitors of all ages; Fountains Abbey is a World Heritage site. At the centre of the Cistercian way of life lay the spiritual ideal of settling 'in the desert', yet the White Monks were to become significant land-owners in Yorkshire (and beyond) and had an enduring impact on their local environment.

The Project, led by Dr Sarah Foot of the Department of History, is sponsored by the New Opportunities Fund's ground-breaking £50 million UK-wide digitisation programme, which is designed to enable the learning materials and resources currently contained in galleries, libraries, museums, universities and other centres of excellence, to be directly accessible via the Internet. Visit the site at: www.cistercians.sheffield.ac.uk

Briefly...

Celebrating the first fruits of partnership

THE FIRST cohort of graduates from the medical course at the Perak College of Medicine in Ipoh, Malaysia, received their degree certificates from the Vice-Chancellor, Professor Bob Boucher, in September 2002. The course is a result of a partnership between the College and the University. The students undertook the pre-clinical part of the programme in Sheffield, before returning to Ipoh to complete their studies.

Fourth side for Firth Court

THE FIRTH COURT QUADRANGLE has finally been completed. An award from the Joint Infrastructure Fund of £23.6 million, together with other grants of £4.75 million, has resulted in a new building for the Institute of Molecular Physiology, and new and refurbished laboratories for the Departments of Molecular Biology and Biotechnology and of Biomedical Science. The new facilities are designed to strengthen further the University's world-class reputation in the molecular life sciences.

Performance increases student numbers

THE UNIVERSITY OF SHEFFIELD'S excellent all-round performance as a higher education provider has been recognised by the Higher Education Funding Council for England (HEFCE), which has allocated it funding for one of the country's largest increases in student numbers over the next three years. An additional 866 undergraduate and postgraduate places will be introduced. This is more than 14 per cent of the total national allocation and represents £3.9 million in extra funding.

Meet the Mafia boss of the ant world



Immobilisation in *Dinoponera* ants. Photo: Dr Thibaud Monnin

THE LARGEST ANT IN THE WORLD, *Dinoponera quadricaps* from Brazil, measures three to four centimetres long. Researchers from the Department of Animal and Plant Sciences have discovered that the alpha female in each colony gives rivals a 'kiss of death' as a signal for their 'mob' to punish the offender.

The colonies are small, with only one breeding female. This female is the 'mother ant' and all the other ants in her group are normally her daughters. Male ants play no active role in colony life. *Dinoponera* ants are different from most other ant species in that the alpha ant is not a queen, but a mated worker. This means that any female can potentially become the alpha ant, leading to increased rivalry within the colony compared to other ant species.

Francis Ratnieks, Professor of Apiculture, explains: "If the mother ant has her position threatened by another female, she will wipe her sting against the aggressor, leaving behind a distinctive chemical mixture. On detecting the scent, lower ranking females will punish the offender. The punishment sometimes results in death. Our study shows that ants can have similarities to humans in that both police their societies in order to prevent undesirable behaviour."



The Dainton Building, which houses the Department of Chemistry, has been extensively refurbished

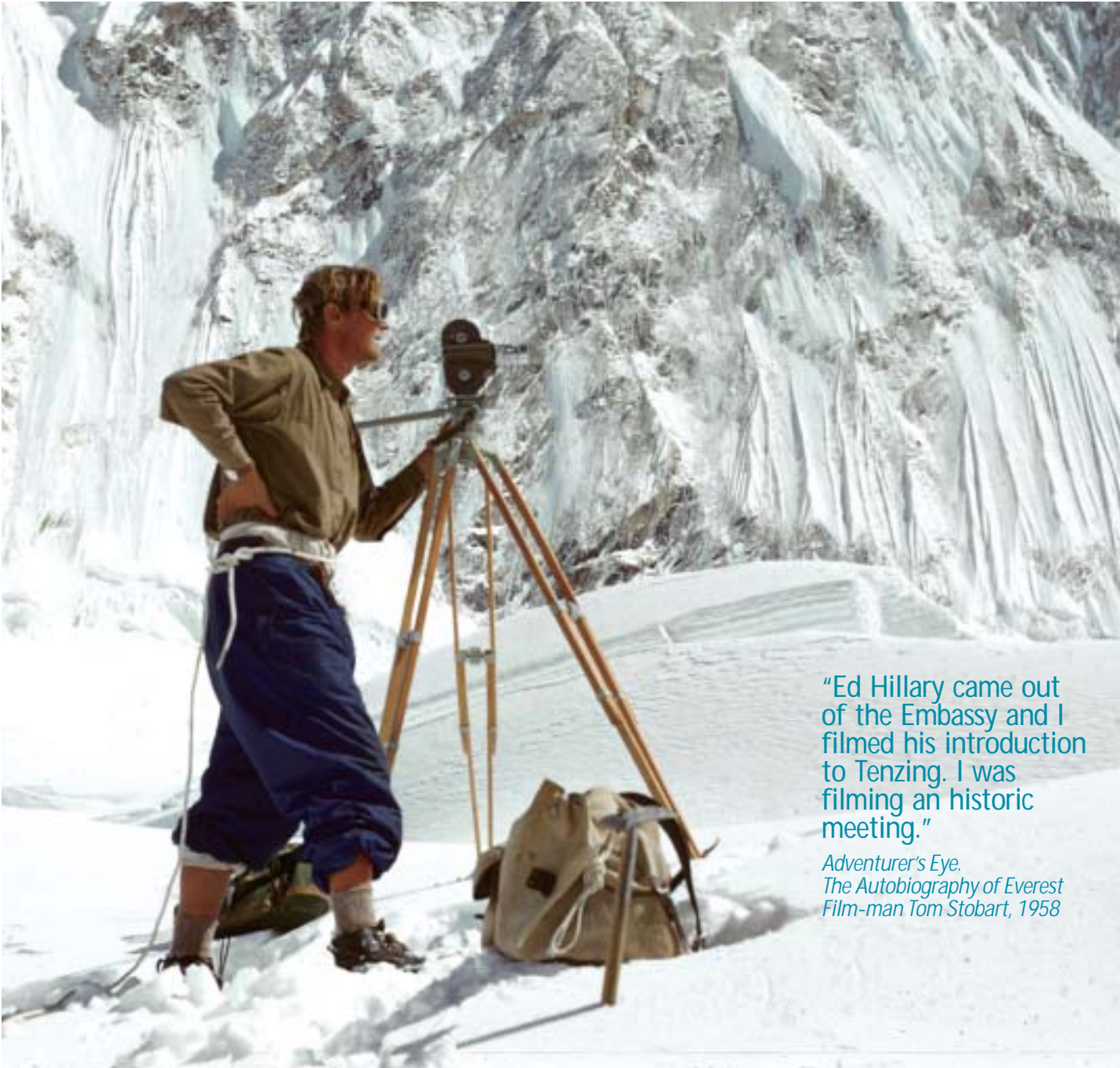
Dainton Archive comes home

THE PERSONAL AND WORKING PAPERS OF LORD DAINTON, Chancellor of the University from 1978 to 1997, have been formally inaugurated as one of the University's Special Collections by Lynne Brindley, Chief Executive of the British Library. A special ceremony to mark the occasion was attended by Lady Dainton and members of her family.

The collection, which extends from Lord Dainton's early life in Sheffield right up to the year of his death in 1997, has been collated by the National Cataloguing Unit for the Archives of Contemporary Scientists, based at the University of Bath.

It covers Lord Dainton's distinguished contributions in many walks of life, most notably higher education, scientific research and the library world.

Speaking at the ceremony, Lady Dainton said that it had been her husband's wish that his papers should eventually reside in the University: "Fred's ties with both the University and the City of Sheffield meant an awful lot to him, and I am sure he would have approved of the excellent job done by the cataloguers."



“Ed Hillary came out of the Embassy and I filmed his introduction to Tenzing. I was filming an historic meeting.”

Adventurer's Eye. The Autobiography of Everest Film-man Tom Stobart, 1958

Filming the conquest of Everest

Fifty years ago, Tom Stobart's ambition led him to record the first ascent of Everest.



Main picture (left): Tom Stobart with cine camera in the Western Cwm. Above: Tenzing Norgay (left) and Edmund Hillary drink tea in the Western Cwm after their successful ascent of Mount Everest. Hillary is holding Tom Stobart's mug. Both photos: Royal Geographical Society



Tom Stobart

Tom Stobart (pictured above at the University in 1934/1935) was awarded an OBE in 1953. Other expeditions followed the first ascent of Everest, including one to find the Abominable Snowman. He went on to establish himself as a leading cookery writer. *Herbs, Spice and Flavourings* is still in print and is based on the extensive notes he made on his travels in 70 countries. He died in 1980.

A graduate of the University of Sheffield, Tom Stobart completed his BSc (Hons) in Zoology in 1936. He then took up a Colonial Service Scholarship at Cambridge but left to train at the Film Unit at Dartington Hall in Devon. “In 1937 the film industry was one of the most difficult in the world to get into unless you knew the right people. I did not even know the first thing about films, let alone the right people. Moreover, what I wanted to do was not even something in the normal line of film work, and it certainly had never been attempted as a full-time job. I wanted to film original exploration and expeditions – and that was not normal work.”

He travelled across Eastern Europe whilst putting together his first feature on *Rivers*, ending up in India where he joined the army, founding a unit to make films for the General Staff: “For two years I worked without stop, week-ends as well as weeks, interesting and rewarding work with travel all over India thrown in... I was learning my business in a way impossible in peace-time.”

Following the war, he explored further, with expeditions to Africa, Antarctica and Australia. He commented: “I suppose of all things I ever wanted to do, to go on an Everest expedition was *it*. Now, suddenly, out of the blue had come news of a fresh attempt scheduled for 1953, and the possibility that a film would be required. I had sent a cable at Christmas, paid a fleeting visit to London in July, and had been provisionally accepted.”

He was the last one of the 13-man core team to be allotted his place. Climbing Everest pushes even the strongest mountaineers to their physical and mental limits. In addition, filming the events as they unfold requires an exhausting effort. Tom was realistic when he started to plan the trip. “I was far from convinced that a professional quality film of a Himalayan expedition could be made and of Everest least of all... There were certain very obvious problems. First, the cold. The theoretical low temperature at the top of Everest – and nothing less would do as a basis for planning – was about 80 degrees of frost. Weight was a much more serious difficulty.”

He took two main cameras, each weighing 8lbs, and four ultra-lightweight cameras of only 2½ lbs each. The main cameras were equipped with a 12" Bloomed Telephoto lens, capable of bringing into full-screen the figure of a man at a distance of 100-150 yards. Figures in clear light could be discernible at a distance of 4,000 feet.

Luck was with him from the beginning: “At that time I could give no guess whether or not our expedition would succeed; who amongst all my companions would be important, or who become the ‘stars’. So I had to set out to do the formidable task of filming *everyone*... Ed Hillary came out of the Embassy [in Kathmandu] and I filmed his introduction to Tenzing. I was filming an historic meeting.”

The 175-mile trek from Kathmandu to the Everest region began on 10 March, Tom's 39th birthday. Fighting to cope with the altitude as

they got higher and higher, he filmed the comings and goings. James Morris, in his article that appeared in *The Times* house journal in 1953, noted that: “Tom Stobart, the expedition's cinecameraman, who is a climber of experience, found at one time that taking any pictures at all was a most intolerable bore and mental burden.”

Tom was concerned about capturing all the events. The lightweight cameras were brought into operation and he asked his colleagues: “When anyone goes for the top see they take one of these cameras. Just try...” The final drama took place on 29 May, when Edmund Hillary and Tenzing Norgay reached the summit. The wait at Camp IV was becoming unbearable. Finally, a line of climbers was seen descending the South Col. Tom described his reaction: “I was so excited that I began a stumbling run towards them. ‘Did you do it?’ I panted. They all stood there grinning and George Lowe gave me a silent, but oh, so expressive, thumbs-up.”

Tom then filmed Hillary and Tenzing's meeting with the expedition's leader, Colonel John Hunt. These precious scenes, along with the reels of film already taken, were safely transported back to England where the work on *The Conquest of Everest* began. The film was nominated for an Academy award for best documentary feature in 1953. Tom described his feelings at the London première: “Once more, amidst flashing diamonds, we made the ascent of Everest from warm seats, and when we got to the top it seemed a pity that it was all over, and that Everest no longer stood as a challenge.”

Sheffield's green and pleasant land

With 150 woodlands and 50 public parks, Sheffield defies its traditional industrial image. The city's public spaces are now undergoing a radical transformation. The innovative Winter Garden and the restoration of the Botanical Gardens are providing oases of calm in the middle of the urban environment.



The restored Pavilions in the Sheffield Botanical Gardens

The Winter Garden

The last decade has seen a dramatic regeneration of the centre of Sheffield. The £120 million Heart of the City project was conceived in 1994 with the aim of providing the city with a vibrant new focus, attracting people, jobs and investment. The Peace Gardens, next to the Town Hall, were redesigned in 1997; this was followed in 2001 by the opening of the Millennium Galleries. The Winter Garden is the project's final phase and its crowning glory.

Gone is the old Town Hall extension, known locally as the 'egg box'. In its place is the largest glasshouse in any European city centre. Designed by Pringle, Richards, Sharratt Architects, the building provides an indoor public garden, in contrast to the 'summer' Peace Gardens nearby. The dramatic timber frame is 70 metres long, 22 metres wide and nearly

22 metres high and is glazed with 2,100 square metres of glass. A temperate greenhouse, the structure is home to 150 species of plants, including palms from Central America, Madagascar and China.

Sheffield-born Michael Palin – author, traveller, former Monty Python member and an honorary graduate of the University – is patron of the Winter Garden: "I love the fact that it's close to the Millennium Galleries, which is another very striking building. In the past there have been buildings in Sheffield that have not been that great and it's fantastic that there are two examples of top-class architecture so close together in the city centre. It's wonderful." The Garden was officially opened by Her Majesty the Queen on 22 May 2003.



Inside the restored Pavilions. Photo: Helen Scarlett

Sheffield Botanical Gardens

Just a short journey from the city centre, the end is in sight for a major rejuvenation of Sheffield Botanical Gardens. One of the most dramatic projects has been the restoration of the three Pavilions, built in 1836 and some of the oldest surviving examples of curvilinear glass construction in the country. The ridge and furrow glass corridors that formerly linked the Pavilions have also been reinstated. Nearly 4,000 people visited them on the first day of opening at Easter 2003. The plants they now contain are all from temperate regions – Asia and the Himalayas, Australasia, South Africa, Central and South America.

Covering 19 acres and first opened to the public in 1836, the Gardens are returning to their former glory thanks to the committed efforts of a local partnership of professional and voluntary

groups. Dr Sue Kohler, Chair of the Friends of the Botanical Gardens (FOBS), comments: "The public have long and very affectionate memories of the Gardens. They were something to be proud of and they badly want the Gardens to be gorgeous again." The Gardens are listed by English Heritage as a Grade II site of special historical and architectural interest, due to the preservation of much of the original design and the concentration of historic listed buildings and structures.

After the Heritage Lottery Fund announced its Urban Parks Programme in 1996, the Sheffield Botanical Gardens Partnership was successful in attracting a grant of £5.06 million for a complete garden restoration. In order to access these funds, however, they have to raise £1.25 million of matched funding, of which only £250,000 is still needed. This is being raised by the voluntary sector – the Sheffield Botanical Gardens Trust and FOBS. FOBS is organising a series of events to raise money, including guided tours, children's days and the ever-popular plant sales, while the Trust approaches charitable and commercial organisations and manages the fund in a tax-effective way.

"A major regional centre of botanical and horticultural excellence"

The University's Department of Landscape has provided specialist reports on the plantings and their conditions and research on the historic restoration, balancing the requirements of the Heritage Lottery Fund with those of the public. The strategy is to restore the Gardens on the basis of their late 19th century condition, reconstructing the spirit of the layout of this period. The Gardens were originally designed by Robert Marnock in the Gardenesque style, the main characteristic of which is that all the trees, shrubs and plants are positioned and managed in such a way that each is displayed to its full potential in scattered planting.

The work is due to be completed in September 2004. The first phase was the restoration of the Main Entrance and Gatehouse, the Curator's House and South Lodge. Following the completion of the Pavilions, attention is now focused on landscape restoration and the reinstatement of key features, such as the Bear Pit, fountain and Pan Statue. There will also be a major enhancement of the plant collections throughout the Gardens. There will be more than 20 areas dedicated to plants from different parts of the world, from the Mediterranean to the Pennines. "These collections will present different themes which will give a strong foundation for developing educational projects. The Gardens will become a major regional centre of botanical and horticultural excellence," concludes Dr Kohler.

Inside the Winter Garden at night. Photo: Sheffield City Council



yourcity

For further information, please visit:

Winter Garden
www.sheffield.gov.uk
Sheffield Botanical Gardens
www.sbg.org.uk

your people

Sheffield alumni in the news

A noble champion of science



Lord Porter

LORD PORTER, who died on 31 August 2002, made a fundamental contribution to our knowledge of chemical reactions and to the public understanding of science. It was at Cambridge, following a first degree at Leeds and wartime service in the Royal Naval Volunteer Reserve, that he conceived the idea of using very short-time pulses of light to examine very fast chemical reactions. The importance of this work was recognised in 1967 by the award of the Nobel Prize for Chemistry, jointly

with Professor Ronald Norrish and Manfred Eigen of Germany. In 1955, George Porter became Professor of Physical Chemistry at Sheffield, where he gathered together a group of scientists who transformed the department into one of the best in the country. After leaving Sheffield in 1966 he devoted the rest of his distinguished career, first as the Director of the Royal Institution and then as President of the Royal Society, to championing the cause of science.

Stamp commemorates famous aviatrix



Amy Johnson with her De Havilland DH60G plane
Photo: Royal Mail

THE CENTENARY OF THE BIRTH of Amy Johnson (BA 1925) has been commemorated on a Special Stamp produced by the Royal Mail. Part of the Extreme Endeavours collection, the new stamp celebrates her solo flight to Australia in 1930. Amy followed a General Arts degree, in Latin, French and Economics, at Sheffield, with a view to becoming a teacher. Her legendary attendance at Engineering classes, however, probably had a far more long-term effect on her career.

The University named the building housing the Department of Automatic Control and Systems Engineering as the Amy Johnson Building in 1993, in recognition of her pioneering achievements.

Champion of Yorkshire's museums



Janet Barnes. Photo: York Evening Press

JANET BARNES, a familiar face to many in Sheffield and a graduate of the University (BA 1976), has taken up a new challenge in York – as Chief Executive of its Museums and Gallery Trust. The county capital is only the second

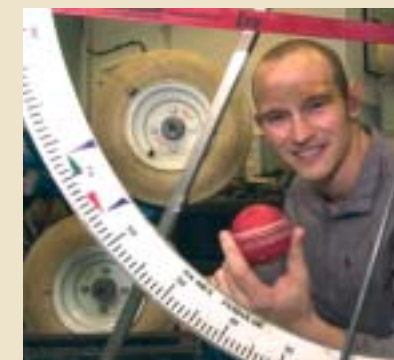
major city in the country to set up a museums trust. Sheffield was the first in 1997 and Janet was the leading officer to manage the process of change. She was also heavily involved in the creation of the Millennium Galleries, opened in 2001 as part of Sheffield's Heart of the City Project.

Janet was Honorary Curator of the Turner Museum of Glass for 20 years and was involved with the management of the Hawley Tool Collection of edge-tools and cutlery.

She was awarded an honorary degree by the University in 2000 in recognition of the development of Sheffield's galleries and museums and of the preservation of the University's own heritage.

Pitching in as a role model

RAISING THE AWARENESS of science and engineering among young people is what David James (MEng 2000) does when he isn't investigating the standards of English cricket pitches for his PhD. He has been selected as a member of the 13-strong BE YOURSELF! Team by the Engineering and Physical Sciences Research Council. The project promotes science and engineering to young people, giving them the chance to fulfil their ambitions and realise their potential. David is featured on the NOISE (New Outlooks in Science and Engineering) website at www.noisenet.ws/index.php



David James. Photo: Sheffield Newspapers Ltd

The Maltese connection



Vincent Fean

THE BRITISH HIGH COMMISSIONER to the Republic of Malta has strong links with Sheffield, both past and present. Vincent Fean (BA 1975) met his wife, Anne Stewart, whilst they were both studying at the University. Their daughter, Catherine, graduated in 2002 and their youngest child, Dominic, returns to Sheffield next year after his year abroad in Bordeaux. "I thoroughly enjoyed my happy time at Sheffield," says Vincent. "I had good, enthusiastic lecturers such as Terry Pratt and Annie Rouxville and

one-off characters like Mike McColgan, who reduced all German literature to an expression of the class struggle. Saturdays were devoted to the (mis)fortunes of my beloved Clarets (Burnley FC) against the Owls or the Blades."

He joined the Foreign and Commonwealth Office straight after graduating. His appointment in Malta comes after a series of postings to places as diverse as Baghdad, Gaborone, Damascus, Brussels and Paris. "Our job here is to promote UK interests in Malta and report back on developments relevant to the UK. There is a lot of scope for partnership between the UK and Malta in the European Union, which Malta will join next May."

She flies through the air



Michèle Lainé

A CAREER AS AN AERIAL ACROBAT isn't perhaps the first thing that comes to mind for most Physics graduates, but Michèle Lainé (BSc 1991, PhD 1997) was certain of what she wanted to do when she left University. She is now one half of the successful aerial dance duo Viva, performing all over the world at corporate functions and special events.

Michèle started gymnastics when she was two and reached international standard in four-piece artistic gymnastics when she was 12. A place at University limited the amount of time she could devote to the sport but the gymnastics club introduced her to the director of a circus company with whom she has now worked for 12 years. Her PhD took four-and-a-half years to complete, as she toured with Sheffield-based Swamp Circus for six months each year.

This experience gave Michèle the confidence and contacts to set up Viva with Jane Osborn. They taught themselves the technique known as aerial silks to create beautiful and original aerial spectacles. Examples can be seen on their website at: www.vivaaerialdance.co.uk

Michèle is the right-hand performer in the 'Acrobat' idiom for BBC1. Photo: BBC



Accolades for *The Hours*



Stephen Daldry (second from right) with English Literature students in 2001

THE LATEST FILM to be directed by Stephen Daldry (BA 1982, Hon LittD 2001) has attracted a plethora of international awards. *The Hours* gained nine Academy nominations, including one for Best Director, with Nicole Kidman winning an Oscar for her portrayal of Virginia Woolf. Her success continued at the Golden Globes and the BAFTAs, where Stephen was also nominated as Best Director.

Stephen followed the drama track within his English Literature degree, dividing his time between the department's own Theatre

Workshop and the University Drama Studio. He was a charismatic chair of the University Theatre Group and was awarded the William Empson Prize for Drama. He spent three years at Sheffield's Crucible Theatre before moving to London, attracting attention for his work at The Gate where he created a commercial success out of radical theatre. In 1992, he was appointed Artistic Director at the Royal Court Theatre. His subsequent move into feature films saw his directorial debut, *Billy Elliott*, receive three Oscar nominations, including one for Best Director.



“If we are successful in our quest, then we are looking at a place in the history books.”

In search of dark matter

All visible matter in the Universe makes up less than ten per cent of its mass, swirling around in – what? Astronomers believe that the remaining 90 per cent must be invisible ‘dark matter’, in order for stars to move round in galactic islands, for galaxies to cluster together and for the Universe to look the way it does. The way to prove this theory is to investigate the dark matter itself. First of all, however, they need to find it.

The UK Dark Matter Collaboration

The UK Dark Matter Collaboration consists of:

- The University of Sheffield
- CCLRC Rutherford Appleton Laboratory
- Imperial College
- The University of Edinburgh

Overseas collaborators:

- Occidental College, USA
- Temple University, USA
- Lawrence Livermore National Laboratory, USA
- UCLA, USA
- Texas A&M University, USA
- Institute of Theoretical and Experimental Physics, Russia
- LIP-Coimbra, Portugal

Far left: Research Associate, Dr Sean Palling, views readings
Left: Scientists on their way to work in the Boulby Underground Laboratory



Solving the mystery of the missing 90 per cent of the Universe is now one step closer with the opening of the Boulby Underground Laboratory for Dark Matter Research. Over 1,000 metres beneath the North York Moors, the new facility is located in the working salt and potash mine at Boulby, near Whitby. Here, a group of UK scientists has installed a series of experiments to detect Weakly Interacting Massive Particles (WIMPs), a prime candidate for the missing mass of the Universe. The laboratory has been awarded £3.1 million from the Government's Joint Infrastructure Fund (JIF), providing enhanced underground laboratories and complementary

surface facilities to create one of the world's foremost research centres for identifying and isolating dark matter.

British scientists, including a team from the University of Sheffield led by Professor Neil Spooner, are playing a leading role in the worldwide race to discover the particles. It will be a major coup for UK science if the project is successful.

On the face of it, the new laboratory looks like any other high-tech environment. Computers and electronic equipment quietly work away, while researchers busy themselves at their desks. Just about the only indication that this is no ordinary laboratory are the respirators that the scientists are

obliged to carry in case of fire. These, and their miner's overalls, helmets and lamps.

Although billions of WIMPs are probably passing through us every second, they hardly interact with ordinary matter and so are extremely difficult to detect. Occasionally, however, they do knock into the nuclei of atoms, and the experiments at Boulby are designed to detect these rare collisions. Professor Spooner compares detecting the elusive WIMP to playing billiards with an invisible cue ball: “You don't actually see the WIMP, or cue ball, itself; but you can see the recoil of the billiard ball as it hits.”

When a WIMP collides with the nucleus of an atom, it will knock it

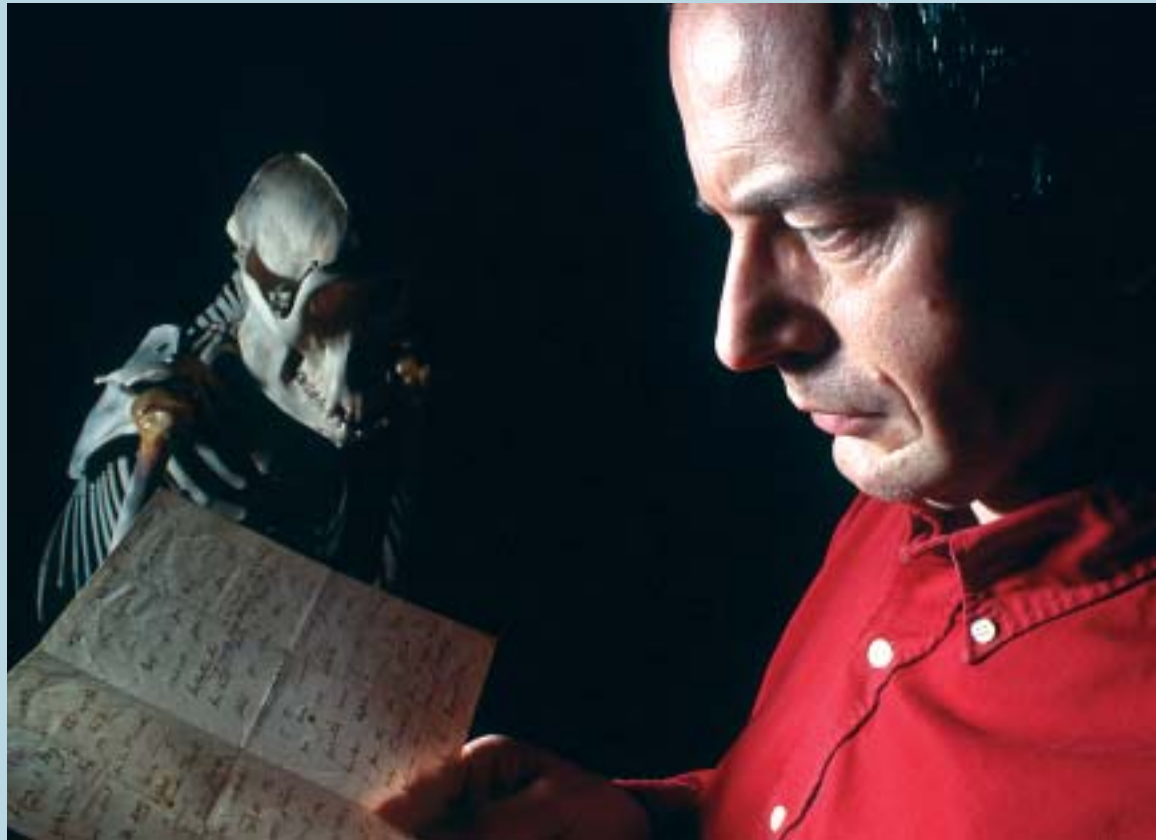
backwards and the recoil energy released by the atom can be detected in one of three ways, depending on the detector material: there will be a slight rise in the temperature, a slight electric charge is released or a photon of light is released. As WIMPs so rarely collide with matter, it is important to screen out as much background noise in the small signal produced by collisions as possible. The location of the laboratory at the bottom of a mine screens out particles from space, such as cosmic rays, and from radioactive substances. The salt mine has a low natural radioactivity and absorbs most of the particles coming in from space. Encasing the detectors in lead or copper provides more protection,

reducing the radiation by a factor of a million. High-purity materials are used in every stage of constructing the detector and careful analysis is carried out on all signals recorded to screen out those caused by other particles.

DRIFT (Directional Recoil Identification from Tracks) is the first experiment to be installed in the new JIF laboratory. It is unique as its aim is not only to detect WIMPs, but also to determine which direction they come from. The Earth is subject to a steady stream of WIMPs from space as it moves through the Galaxy, blowing from the direction of the motion. As the Earth rotates on its axis, there should be a daily modulation of the signal direction. DRIFT is the world's first

experiment designed to look for this modulation. The DRIFT collaboration includes researchers from Occidental College and Temple University in the USA.

Despite the new advances, dark matter remains elusive and could be so for some time to come. The sensitivity of the detectors is being worked on continually and it could take at least five years before a definitive detection takes place. Methods need to be checked and possible sources of error eliminated. However, the goal is too important to be ignored. As Professor Spooner says: “If we are successful in our quest, then we are looking at a place in the history books. This will be one of the great discoveries of our time.”



Professor Tim Birkhead with the rediscovered Darwin letter. Photo: Yorkshire Post

Darwin letter discovered in filing cabinet

A LETTER FROM CHARLES DARWIN, lost for 100 years, has been rediscovered by Professor Tim Birkhead, of the Department of Animal and Plant Sciences. Professor Birkhead is also a member of the Darwin Correspondence Project, which exists to publish the definitive edition of letters to and from Darwin. The new letter, along with one already known to belong to the University, is now published in the 13th volume of Darwin's correspondence by Cambridge University Press.

Professor Birkhead explains: "I knew that the University owned one of Darwin's

letters and I decided to make a poster describing our links with him. So I took the letter from our safe. I then discussed the poster with a colleague who, to my surprise, said he had the letter in his filing cabinet. When I disputed this, we simultaneously realised that the University had assumed it had one Darwin letter, when in fact it had two."

Dating from 1865, the two letters are part of a correspondence with Henry Denny, an entomologist at Leeds City Museum. In his first letter, Darwin wonders whether Denny is aware of any evidence that body lice

have developed into different species on the bodies of different races of humans. Denny cannot commit himself to a firm view so, in the second letter, Darwin extends his line of enquiry to species of lice observed on different species of domestic mammals and birds.

Henry Denny's son, Alfred, was appointed to the Chair of Zoology at the University in 1884, remaining in post until 1925. As an interesting coincidence, Professor Birkhead is honorary curator of the Alfred Denny Museum, containing the University's zoology collection.



Echinacea purpurea 'Magnus'. Photo: Kate Horton

A prairie on your doorstep

FORGET THE DECKING and blue wood preservative. The latest way to bring innovation and excitement into the garden is contained in a packet of seeds. Five years of research at the University have resulted in glorious wildflower meadows that provide colour and interest throughout the summer and autumn.

Drs James Hitchmough and Nigel Dunnnett of the Department of Landscape have been developing seed mixes and cultivation techniques that create spectacular displays. The romantic notion of a wildflower meadow that includes a mix of grasses and flowering plants is

achievable, but is relatively labour intensive. James and Nigel's research has shown that grass is the greatest inhibitor of flowers, especially in nutrient-rich garden soils. Instead, by densely planting a mixture of colourful annuals and perennials, the team has created areas of happily co-existing flowers which do not suffer from competition from grass.

Once established, the meadows only need an annual tidy up in late winter. This gives the plants time to reabsorb carbohydrates from the leaves and stalks, so that none of their energy is wasted. The result could be described as untidy in the later

months of the year but, by choosing species such as *Rudbeckia* and *Eryngium* that look good in skeleton form, the meadows provide interest for a long period.

Trials are under way at the Eden Project and at RHS Garden Wisley. "It is plain that for best results such meadows or 'prairies' must have a species mix tailored to the site," explains James. "And to an ecologist there is no stability anyway – no perfect mix of plants, which, once found, will automatically perpetuate itself. Everything is in flux."



William Hogarth, *Cruelty in Perfection*, plate 3 of *The Four Stages of Cruelty*, 1751, reproduced courtesy of Professor Tim Hitchcock, University of Hertfordshire

Old Bailey court records now accessible

a special project directed by Dr Bob Shoemaker of the University of Sheffield and Professor Tim Hitchcock of the University of Hertfordshire, and involving the intensive efforts of dozens of experts and transcribers.

Dr Shoemaker says: "The Old Bailey court records are a treasure trove of social, legal and family history because they tell us so much about the lives of ordinary people, outlaws and life on the margins of London society." They represent the largest single source of information about non-elite lives and behaviour ever

published and provide valuable evidence of the circumstances surrounding crimes, the lives of the accused and their trials. A series of learning packages make the material accessible to students in schools and universities, researchers of family and local history, and users interested in the histories of individual communities.

The Old Bailey Proceedings Online website – at www.oldbaileyonline.org – has been funded with the support of the Arts and Humanities Research Board and a £370,000 grant from the New Opportunities Fund.

Briefly...

Today's way to a PhD

THE TIME-HONOURED WAY of gaining a coveted PhD is set to change. 'New Route PhDs' have been introduced by the University in response to changes in the knowledge and skills demanded of research graduates in a rapidly expanding worldwide market.

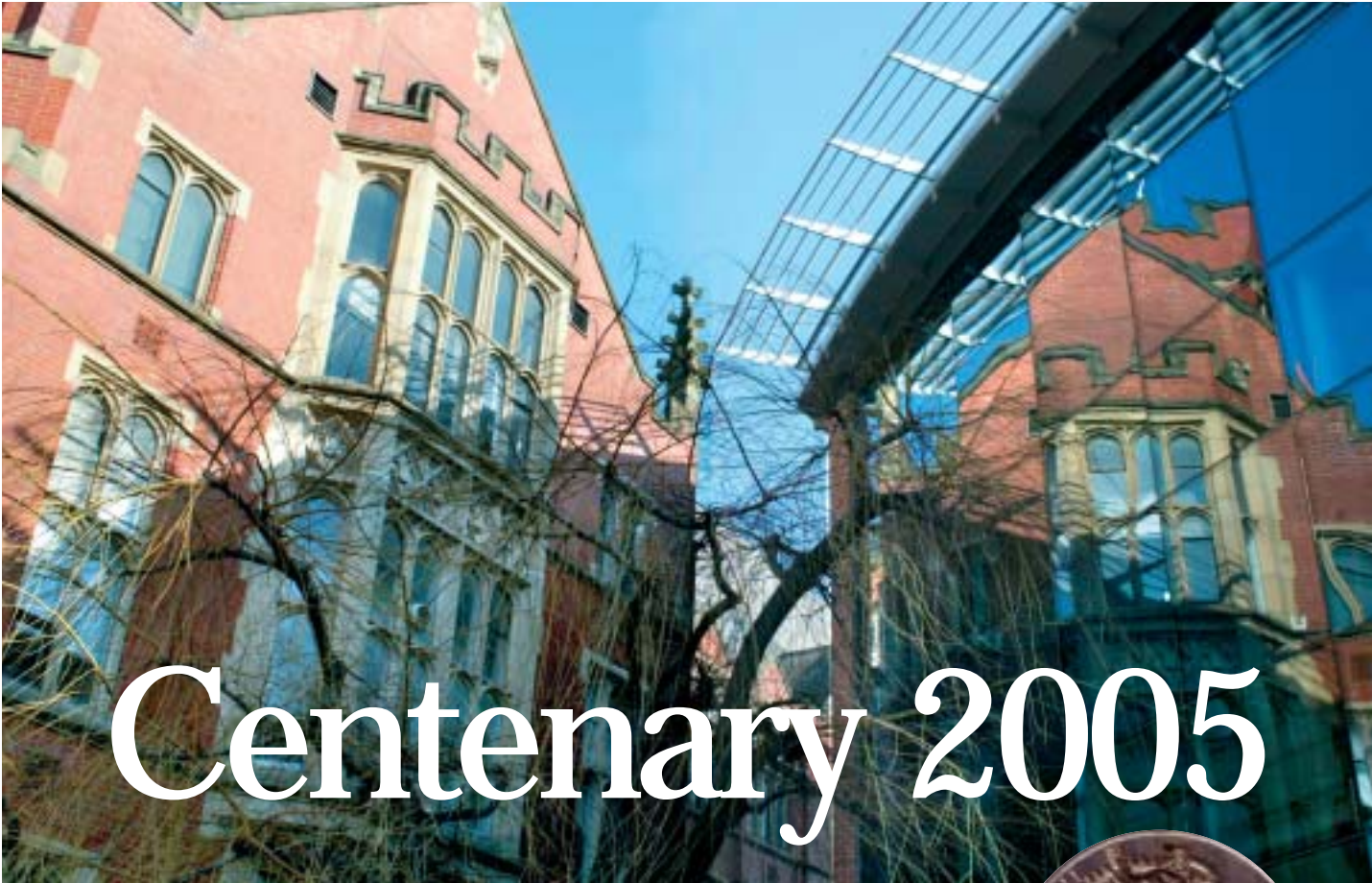
These four-year courses combine a specific research project with coursework and professional skills development. A portfolio of 14 programmes is on offer across a range of disciplines. A full listing of subjects is available at: www.sheffield.ac.uk/pgresearch

Your smile can let you down

FIRST IMPRESSIONS do count. Research conducted by a team from the University's School of Clinical Dentistry, Guy's, King's and St Thomas' Dental Institute has revealed that strangers tend to make snap judgements about intelligence, personality and success based purely upon the appearance of teeth.

Time Team in town

CHANNEL 4'S TIME TEAM and members of ARCUS, the University's Archaeological Research Consultancy, have been working together to create a TV programme about the industrial heritage of Sheffield, due to be screened next spring. Tony Robinson and Mick Aston, presenters of the programme, joined staff from the University to present a *Bowie knife*, which was made during filming, to the Hawley Tool Collection, housed in the Department of Archaeology and Prehistory.



Centenary 2005

Above: The fourth side of the Firth Court Quadrangle is now complete. Right: 1905 medal commemorating the opening of the University

On 31 May 2005, the University of Sheffield will celebrate the centenary of the granting of its Royal Charter of Incorporation as a centre 'for the advancement of knowledge, the diffusion and extension of arts, sciences and learning, and the provision of liberal, professional and technical education.'



The contents of the time capsule revealed (see opposite) Photo: Sheffield Newspapers Ltd

A series of special events spanning the whole of 2005 will highlight this important landmark in the University's history. The programme of opera, concerts, lectures, alumni reunions, a Centenary Ball and several formal events will have something for everyone – students, staff, alumni and friends.

Particular attention will be paid to two key dates: 31 May, **Charter Day**, marked by a special thanksgiving service in Sheffield Cathedral; and 12 July, **Centenary Day**, the anniversary of the opening of the University's buildings at Western Bank by King Edward VII and Queen Alexandra.

Centenary History

An important event in the Centenary celebrations will be the publication of a major new History of the University. The story starts in the 19th century, with the development of

yourcentenary

For more information about Centenary 2005, please contact:

Michael Hannon, former University Librarian and Director of Library Services, who has been appointed Centenary Director. He is working with colleagues across the University and the city to ensure that 2005 will be a year to remember. You can contact him via Helena Pinder at:

Tel: 0114 222 2005 or Email: centenary@sheffield.ac.uk

The Centenary 2005 website, with details of the Centenary Programme, is available at: www.sheffield.ac.uk/centenary2005



The 1905 opening ceremony, held on the site of the new Firth Court building



Western Bank in 1952



Union of Students, 2003



Firth Court, 2003

the three separate institutions – Medical School, Technical School and Firth College – which combined in 1897 to form University College, Sheffield, and then the University of Sheffield following the granting of a Royal Charter on 31 May 1905. The book then traces the development of the University through the 20th century and into the new millennium.

To shape the History, the University archives are being researched in depth. However, it is always the personal stories and anecdotes that bring facts and figures to life. The project team is conducting a series of interviews, and over 1,000 alumni have already responded to an email questionnaire about their experiences while in Sheffield. This personal approach characterises the reader-friendly feel of the book. The earliest memories received so far are those of Lydia Manley Henry (one of the very first female medical graduates, who received her degree in 1916), and the interviewees' ages range from 19 to 96.

The author of the History is Dr Helen Mathers, a graduate of the University and a professional historian who has already written the popular *Born in Sheffield*, the story of the Jessop Hospital and women's health services in the city. She comments: "The aim is to put together a serious work of scholarship and at the same time an entertaining and affordable book, lavishly illustrated and produced to a very high standard. It will be an honest account, not an advertising prospectus: this University doesn't need any spin-doctoring."

The project team would be delighted to hear from any alumni who would like to contribute reminiscences or who have memorabilia, including amateur films, which might be borrowed to help with the text or the illustrations. To contribute, or to find out more about the Centenary History, please email: centenaryhistory@sheffield.ac.uk or telephone Dr John Hawthorne, project administrator, on 0114 222 1206.

Centenary medal returns to University

A special medal was struck in 1905 to commemorate the official opening of the University by King Edward VII and Queen Alexandra. An example, pictured left, has recently been acquired by Miles Stevenson, Director of Development at the University. He was alerted to the medal's existence by Dr Melvyn Brooks (MB ChB 1969), who spotted it on an online auction. Melvyn and his wife Roma (née Bharier, LDS 1967) have lived in Israel for the last 30 years. By contacting the University, he has helped to save an interesting item of University memorabilia.

Time capsule discovered

Perfectly preserved, it lay in the foundations of Firth Court for a century. Then, during the installation of new air conditioning, a builder's drill went right through the lead and glass time capsule and its secrets were revealed. In June 1903, a casket was buried as part of the ceremony to lay the foundation stone of

University College, Sheffield, as it was then known. Its discovery, almost a 100 years to the day since it was buried, has come as a great surprise. The capsule's lead casing contained a glass box holding papers. These include a set of plans of Firth Court and details of the procession of the Lord Mayor of London from the station to Western Bank to officiate at the ceremony.

Calling graduates of the 1930s

Hossein Farmy was a pre-war engineering student from Iran (then Persia). He graduated in 1938 with a BEng degree and went on to have a successful career in the USA. When he died in 1982, he left a legacy of over £625,000 to the University to provide scholarships which now carry his name. The University would be delighted to hear from any graduates who remember Mr Farmy, particularly if they have a photograph of him from his student days. If you can help, please contact Miles Stevenson at the Development and Alumni Relations Office (see page 1 for details).

yourshop

The Studio shop in the Union of Students offers a range of branded merchandise, including gifts and clothing featuring the University shield. Visit the website at: www.sheffieldunion.com/studio



Photos: SheffieldVolunteering



"It's incredibly rewarding when you know that you have helped someone achieve their targets." *Student volunteer, Myers Grove Secondary School*

Giving something back

The Union of Students has a strong tradition of community volunteering. For many years organised under the banner of Student Community Action, this element of the Union's work was relaunched as SheffieldVolunteering in October 2002. The new name was chosen as it reflects the main motivation behind student involvement – "to give something back to Sheffield".

SheffieldVolunteering exists to provide short volunteering opportunities for University of Sheffield students. A grant from the Higher Education Active Community Fund (HEACF) has transformed the existing volunteering programme and enabled many more students than ever before to play an active role in their local community.

The range of activities undertaken by student volunteers has dramatically increased during the last year, following the award from HEACF to fund new projects. Part of the Government's Active Community scheme, the fund has been set up to enhance the role that universities play in their local community and to encourage greater involvement of students in voluntary activities. SheffieldVolunteering now manages 15 community initiatives and continues to recruit students for 50 local organisations. Student volunteers play an important role in helping local organisations to provide services to all sections of the community in Sheffield, including children and young people, people with learning disabilities, the homeless, refugees and asylum seekers and the elderly.

The focus of the organisation is in the Union of Students, with a staff of three administrators. They work closely with a student committee that meets regularly to decide policy. Kiran Sandhu, Chair of SheffieldVolunteering, reports: "Since October 2002, we've dealt with over 920 individual enquiries about volunteering – that's almost five per cent of the full-time student population." These students come from a wide range of subjects and year groups.

At a time when many students need to find paid employment to help fund their studies, this level of commitment to volunteering is impressive. Many reasons are given for their involvement: "To have more contact with different people in Sheffield", "To feel that I am doing something positive to help others" and "To use my skills to help others, to meet people who are not necessarily students and to put something back into the community".

Many students are also aware that volunteering is an important addition to a CV. Research carried out on behalf of the national volunteering charity *TimeBank*, by recruitment specialist Reed Executive, found that almost three quarters of employers prefer to recruit candidates with volunteering experience on their CV. Over half of the 200 companies surveyed said that voluntary experience can actually be more valuable than experience gained in paid employment.

SheffieldVolunteering offers a programme of hundreds of volunteering opportunities in schools, student-led initiatives and local charities. They are designed to fit in around studies and can be one-off events or

short-term projects. A lot of students choose to volunteer between one and three hours regularly. Full training is provided and students receive their out-of-pocket expenses. In addition to developing lists of volunteering opportunities, SheffieldVolunteering also provides support for students to create and lead projects in the local community.

The success of SheffieldVolunteering is due to the energy and commitment of the student volunteers, the enthusiastic support of partner organisations and the launch of the HEACF initiative. The team is working hard to ensure that student involvement with local communities goes from strength to strength.

Here are three examples of the many activities undertaken by student volunteers each year:

Just Do It

In just two days in March 2003, 75 students gave over 450 hours of volunteering time to complete 11 tasks for nine local organisations. SheffieldVolunteering organised the event, provided funding, recruited volunteers and made sure that everyone was where they were supposed to be on time. The local groups planned the tasks, bought materials and supported the volunteers on the day. Just Do It gave students a taste of what can be achieved in just a few hours. As a result, many chose to take up regular volunteering.

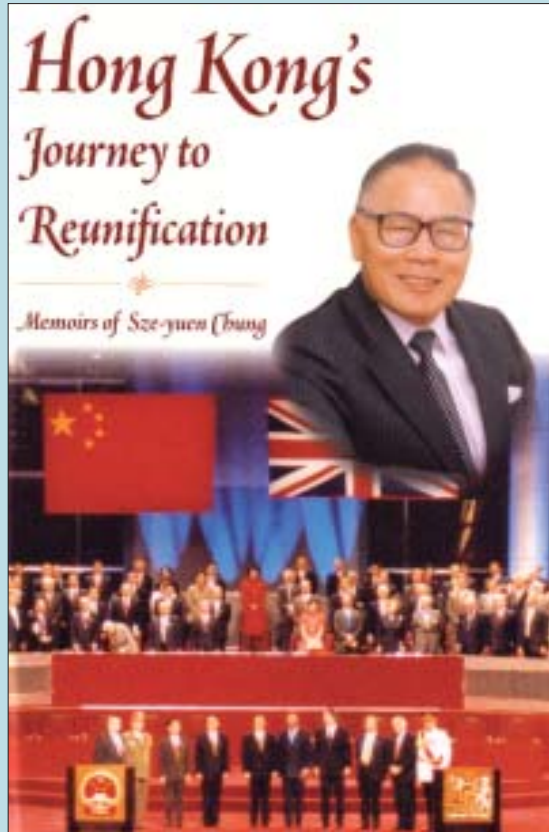
Saturday Playgroup

An integrated project for three to eight-year-old children with learning difficulties and their siblings, the Saturday Playgroup was developed by students in 1994 and has been a registered play provision since 1996. To meet new OFSTED regulations, the scheme now employs two qualified nursery nurses to co-ordinate activities. This change has meant that volunteers benefit from working alongside childcare professionals. The Playgroup is part-funded by the Union of Students. The remaining funds are raised by SheffieldVolunteering and include a grant from the University's Alumni Foundation.

Tutoring and Mentoring

SheffieldVolunteering created placements for 43 student tutors in four schools during the last year. Students were eager to share their subject knowledge and find a practical application for their studies. A further five students acted as mentors to pupils at two schools, with the aim of raising the pupils' aspirations, improving their self-esteem and developing better study skills.

The global perspective



Sir Sze-yuen Chung's memoirs

Students benefit from generous gift

THE UNIVERSITY has more than 1,000 alumni in Hong Kong and one of its most distinguished is Sir Sze-yuen Chung, who took a PhD in Mechanical Engineering in 1951.

To commemorate his time at Sheffield and his on-going association with the University, Sir Sze-yuen Chung has made a generous donation to help establish a scholarship fund for Hong Kong students. In addition, he made a gift to establish the Sir Sze-yuen Chung Resource Centre in the School of East Asian Studies. This centre, which also received support from the University's Alumni Foundation and the School of East Asian Studies, was officially opened by the Vice-Chancellor in April 2003.

News for Japanese alumni

A GROUP OF SHEFFIELD ALUMNI now living in Japan met up for a night-out in Tokyo recently with Tony Ryan, ICI Professor of Physical Chemistry. Tony visited Japan in July to present his Royal Society Christmas Lectures series for Japanese television, and took some time out to tell Sheffield graduates about the latest developments at their University. The group enjoyed themselves so much that they are thinking about establishing a Japanese alumni group.

If you are interested in helping to form a Japanese alumni group, please email Helen Scarlett, at the University of Sheffield: h.scarlett@sheffield.ac.uk

Developing links with Malaysia



The Sultan Abdul Samad Building, Kuala Lumpur. Photo: Miles Stevenson

WITH THE LARGEST NUMBER OF SHEFFIELD ALUMNI outside the UK, Malaysia is proud to have its own Alumni Association, under the guidance and direction of its President, Dato Dr Ikmal Hisham Albakri, one of Malaysia's most distinguished architects. In September 2002, the Vice-Chancellor was delighted to meet alumni in Ipoh and Kuala Lumpur, including members of the Alumni Association of Malaysia. The Association is currently led by a committee of alumni of diverse backgrounds representing graduates from different disciplines and walks of life.

The University wants to strengthen its links with alumni in Malaysia and to establish an on-going alumni relations programme. If you would be interested in helping the Malaysian alumni group, please contact Azmir Abdullah at email: azmir_abdullah@petronas.com.my

Uncovering writing talent in India



Dhruv Ahrrora receives his prize from Stephen Parkin of the University's International Office

OVER 100 ENTRIES were submitted for a national writing competition run by the University in India for final year XIIth Standard students. The topic was 'What makes an inspiring teacher'. Standards were high and the eventual winner of the £500 prize was Dhruv Ahrrora. His school, Delhi Public School, was also awarded £500 for educational materials. Dhruv was pleased with his success: "I clandestinely completed my essay in a Psychology class and off it went. It was dedicated to my first teacher ever – Edith D'Souza, who was the kind of woman that every small boy hopes for – kind, understanding and fiercely funny." The two runners-up were Siddharth Nayaran of DAV Boys Senior Secondary School, Chennai, and Indrapramit Das, of Calcutta International School, both winning prizes of £250.

Calling all Singapore graduates

THE UNIVERSITY OF SHEFFIELD Alumni Association (Singapore), established in May 2002, invites local Sheffield graduates to join us. We need your help to fulfil our aims of:

- Organising networking events and reunions to foster friendship, co-operation and unity among members
- Maintaining links with the University of Sheffield and supporting its programmes where possible
- Helping to promote the University's image in Singapore
- Providing information about the University for prospective students in Singapore.

Although only a year old, the Singapore group has organised several successful events. All have been well attended by members and guests, including our inaugural Sheffield Alumni Dinner and Dance and a Wine and Cheese Evening. Singapore alumni have worked hand-in-hand with the University's South East Asia Office, assisting in the September 2002 Pre-departure Briefing for Sheffield-bound students and the University's Graduation Ceremony held in Singapore.

Please contact us now for more information:

C N (James) Oon, President,
5 Jalan Bunga Raya, Singapore 329450,
email: singapore@sheffield.ac.uk

Alumni in the USA

ALUMNI who are now living in the USA (or living elsewhere but paying US tax) will be pleased to hear that we are taking steps to establish a method of tax-efficient giving in America. Plans are underway to set up 'The University of Sheffield in America' as a '501 (c) (3)' tax-exempt non-profit

organisation. The University of Sheffield in America will enable US tax payers to make tax-deductible donations in favour of the University.

If you are an American tax payer and would like to know more, please email Helen Scarlett, at: h.scarlett@sheffield.ac.uk

Developing international Alumni Relations

THE UNIVERSITY OF SHEFFIELD has over 100,000 alumni in more than 120 countries across the world. We are keen to develop new links with international alumni. If you are interested in forming a new international alumni group in a specific country, or perhaps just helping out at student recruitment fairs, please contact:

Miriam Garner,
Development and Alumni Relations Office,
The University of Sheffield, 277 Glossop Road, Sheffield S10 2HB
Email: m.garner@sheffield.ac.uk Website: www.sheffield.ac.uk/alumni

Honorary graduates from around the world



Mrs Anson Chan

FORMER CHIEF SECRETARY in the Hong Kong Civil Service, Mrs Anson Chan, was awarded the honorary degree of Doctor of Laws at a ceremony held in Hong Kong in September 2002. Professor Philip Jones, the Public Orator, said in his citation speech: "Today, the University of Sheffield confers its own special honour on a professional administrator of the highest calibre, who has worked tirelessly to enhance the reputation of Hong Kong on the international stage." The ceremony also enabled more than 60 Hong Kong-based University of Sheffield graduates to celebrate their success with families and friends and to receive the Vice-Chancellor's congratulations.

Across the world, in the Caribbean, a similar ceremony was held in January 2003 to honour the Governor General of St Lucia, Her Excellency Dame Pearlette Louisy. She received an honorary degree of Doctor of Laws in recognition of her distinguished career and outstanding contribution to educational development in the Caribbean. The event also celebrated the achievements of 55 postgraduate students from Trinidad and Tobago and St Lucia, many of whom had been studying education-related subjects at the University by distance learning.



Her Excellency Dame Pearlette Louisy receives her honorary degree from the Vice-Chancellor

honours and awards

Staff, students and alumni



Dr Nigel Bax, Director of Teaching in the School of Medicine and Biomedical Sciences, has won a National Teaching Fellowship in recognition of his ability to influence and inspire students, staff and the teaching profession as a whole. Dr Bax's prize of £50,000 will fund a scheme to recruit volunteer patients who will be taught to educate and assess healthcare students. He will also be forming a Patients' Council, which will allow the University to take patients' views into account when developing the curriculum.

Dr Nigel Bax

Professors Hwyl Davies (Engineering Materials), **David Howe** (Electronic and Electrical Engineering) and **Derek Linkens** (Automatic Control and Systems Engineering) have all been elected Fellows of the Royal Academy of Engineering.

Professor Robin Dennell (Archaeology and Prehistory) has been named as a British Academy Research Professor.

Dr John Divers (Philosophy) and **Professor Sally Shuttleworth** (English Literature) have been awarded British Academy Readerships.

Professor Paul Dolan (Economics and Health and Related Research) was one of the winners of the 2002 Philip Leverhulme Prizes for outstanding young researchers.

Professor Gordon Duff (Genomic Medicine) has been appointed to the Department of Health's Advisory Group on Genetics Research.

Dr Matthew Flinders (Politics) has been awarded the 2002 Harrison Prize by the Political Studies Association.

Professor David Hall (School of Health and Related Research) has been knighted for his services to medicine; and **Professor Ian Kershaw** (History) has received a knighthood for his services to history.

Professor Barry Hancock (Genomic Medicine) was one of the first recipients of a *Sheffield Star* Community Award, made in recognition of his dedication and expertise in caring for cancer patients at Weston Park Hospital.

Graham Healey (East Asian Studies) is joint editor-in-chief of *The Iwakura Embassy 1871-73*, which has been awarded the Japan Translators Association Prize 2002.

Professor Philip Ingham (Centre for Development Genetics) has been elected a Fellow of the Royal Society.

Professor David McClean (Law) has been elected a Fellow of the British Academy.

Professor David Newble (Medical Education) has won the award for Outstanding Research Publication given by the American Educational Research Association for his *International Handbook of Research in Medical Education*.

Dr Susan Read (Nursing and Midwifery) has been awarded an MBE in recognition of her significant contribution to nursing research and innovation in health care.

Professor Tony Ryan (Chemistry) has been awarded the first EPSRC Senior Media Fellowship, enabling him to showcase his work through newspapers, TV, radio and the Internet. He also delivered the Royal Institution Christmas Lectures, broadcast on Channel 4, in 2002.

Professor Rod Smallwood (Medical Physics and Clinical Engineering) has been elected an Honorary Fellow of the Royal College of Physicians.

Professor Jim Swithenbank (Chemical and Process Engineering) has been awarded the Walter Ahlström Prize 2002, for his outstanding contributions in the field of sustainable energy. He was also awarded an honorary degree by the University in July 2003.



David Moore receives his award from the Chancellor, Sir Peter Middleton

David Moore, a final year medical student, is the winner of the Chancellor's Medal 2003. The award has been made in recognition of his services to the Medical School and to his fellow students. Amongst his achievements are that he was the Founder and Director of the Sheffield Medical Teaching Website, which is used in over 75 countries, and his provision of web design services to the University's Academic Surgical Unit.



Jennifer Pritchard

A national prize designed to highlight the achievements of outstanding women engineering students has been won by **Jennifer Pritchard**, who was awarded a Master's degree in Mechanical Engineering in 2003. The Ford WISE Prize, worth £500, was presented to Jennifer at the Young Woman Engineer of the Year Award ceremony at London's BT Centre in October 2002. By celebrating excellent role models, sponsors Ford and WISE (Women into Science and Engineering) aim to attract more young women to study engineering.



Professor April McMahon

Professor April McMahon (English Language) has been awarded a Fellowship of the Royal Society of Edinburgh, an honour generally given to academics working in Scottish universities. She was chosen to receive the award on account of her contribution to life in Scotland. She specialises in languages, their sounds (phonology) and why they change. Her research has focused on the phonology of Scots accents in the past, to explain how they come to sound as they do in the present day.

Professor James Underwood (Medicine and Biomedical Sciences) has been elected President of the Royal College of Pathologists.

Dr Elspeth Whitty (Academic Radiology) has received the Flude Memorial Prize from the British Institute of Radiology.

Emeritus Professor Alan Yates has been awarded the International Catalonia Prize by the Institut d'Estudis Catalans for services to Catalan language and culture.

Alumni

Dr Francis Annett (DEd 1994), an Education Research Manager, has been awarded an MBE for services to training and education in the North East.

Brigadier Andrew Farquhar (BEng 1975) has been awarded a CBE.

Professor Roderick Flower (BSc 1971), of the John Vane Science Centre, and **Professor Peter Green** (MSc 1972, PhD 1976), of the University of Bristol, have been elected Fellows of the Royal Society.

Bernard Hogan-Howe (MBA 1999), Assistant Commissioner of the Metropolitan Police, has been awarded the Queen's Police Medal for services to the Police.

Crispian Strachan (LLB 1973), Chief Constable, Northumbria Constabulary, has been awarded a CBE for services to the Police.

Derek Turner (BEng 1974), former Managing Director of Street Management for Transport for London, has been awarded a CBE for services to transport in London.



The CLUB WITH AN INTERNATIONAL DIMENSION



Royal Over-Seas League

50% joining fee discount for
The University of Sheffield alumni



The Royal Over-Seas League (ROSL) has a long history of welcoming members from the UK and overseas to its London and Edinburgh clubhouses and organising a variety of arts and classical music projects in Commonwealth countries.

The London clubhouse is in a prime location bordering Green Park and has a private garden, al fresco dining, restaurant, buttery for light meals, bar, drawing room, 77 en suite bedrooms and seven conference and private dining rooms. The Edinburgh clubhouse is centrally situated at 100 Princes Street.

Benefits of membership include economical pricing due to not-for-profit status, events programme, quarterly journal, in-house art exhibitions and concerts, evening speakers and short term access to over 50 other clubs around the world in Canada, Australia, New Zealand, Singapore, Hong Kong, Malaysia, India, South Africa, Kenya, Gibraltar, Spain, USA and elsewhere. ROSL has honorary representatives in 78 countries.



University of Sheffield alumni may enjoy specially discounted joining fees which range from £22 (resident overseas) to £51 (resident within a 50 mile radius of Charing Cross, London). Annual subscriptions range from £80 - £198 and are halved for new members joining for the second half of the year. (New 2004 memberships are effective from 1 November 2003.)



For those aged 17 to 25 and students in full time education (up to the age of 30) the joining fee is waived and the half-year subscription is £32.50.

For further information please contact the Membership Department, remembering to quote **THE UNIVERSITY OF SHEFFIELD**

Over-Seas House, Park Place, St James's Street, London SW1A 1LR
Tel: 020 7408 0214 Fax: 020 7499 6738
(Enquiries: 9.00am-5.00pm Monday-Friday - exts. 216 and 315)
Website: www.rosl.org.uk Email: info@rosl.org.uk

Convocation

I'm sure that fellow alumni will be as delighted as I am to receive this first issue of *Your University* – a sure sign that change is afoot in alumni relations at the University of Sheffield. Convocation gives the new magazine the warmest of welcomes. It means *Convocation News* will cease to be published, but we remain committed to regular contact with all our members.



A view of Firth Court

The newly-established team at the University's Development and Alumni Relations Office is hard at work developing the best alumni relations programme that this University has ever had. It is only right that, as the University approaches its centenary, it makes efforts to reconnect with its former students.

I can vouch for the intensive efforts being made to contact as many alumni as possible and to bring your contact details up-to-date. Last year nearly 18,000 alumni completed a questionnaire sent out by the University and all the resulting information has now been added to the new alumni database. This is far more than just a mailing list. It will make it much easier to organise events and reunions and will help members of Convocation to keep in touch.

But out there are many more of you we still would like to hear from; so please get in touch if you are a former Sheffield student but aren't on the mailing list for this magazine, and complete an alumni questionnaire. You can now even update your details online at: www.sheffield.ac.uk/alumni/services/update.html Or, if you're in touch with friends you made at Sheffield, please make sure they, too, let the University know where they are now.

Another way to keep up-to-date is via the Convocation website, so make www.sheffield.ac.uk/convocation/ a bookmarked favourite on your screen. The Convocation site is now professionally managed and will help to keep members involved in the work and thinking of Convocation. Indeed, a Commission is currently deliberating on the election of members of Convocation to serve on the Court of the University and I hope that it will propose an electronic electoral process. If you would like to play a more active role in Convocation, please do contact me.

The next few years will be challenging and exciting for the University and its alumni. The University will need the support of its alumni in a variety of ways. We all have something to offer, so please don't be shy in coming forward with that offer. The first and probably most important thing you can do is to talk to us. Please do so.

Peter R Downey
Chairman, Convocation
p.downey@sheffield.ac.uk

Nominations for election or business to be considered are to be sent to the Secretary & Clerk, Convocation, Freepost SF456, 9/12 East Parade, Sheffield S1 1AY, to be received no later than Saturday, 18 October 2003.

Annual General Meeting

NOTICE is hereby given that the Annual General Meeting of Convocation for the year ended 31 July 2002 is to be held at the University of Sheffield (exact venue to be notified when numbers attending are known) on Saturday, 15 November 2003 at 11.00am.

NOTICE is further given that the Annual General Meeting of Convocation for the year ended 31 July 2003 is to be held at the University of Sheffield on Saturday, 15 November 2003 at 11.00am or as soon thereafter as practicable.

Business to be conducted will include a presentation by Michael Hannon on the proposals for the University's Centenary Celebrations in 2005 and an Interim Report from the Commission on the Elections for Court.

Nominations are invited for:

- 1 Chairman and Vice-Chairman
- 2 Secretary & Clerk and Treasurer
- 3 Members to serve on the Executive Committee
- 4 One member to serve on the University Council

Members are also invited to submit items for consideration or resolutions in accordance with the By-Laws.

Nominations for election or business to be considered are to be sent to the Secretary & Clerk, Convocation, Freepost SF456, 9/12 East Parade, Sheffield S1 1AY, to be received no later than Saturday, 18 October 2003.

In order to obtain the papers and be given details of the precise venue and agenda, would any member hoping to attend the AGM, please notify the Secretary & Clerk either at the above address or by email at: rbwrigley@norrie-waite.com