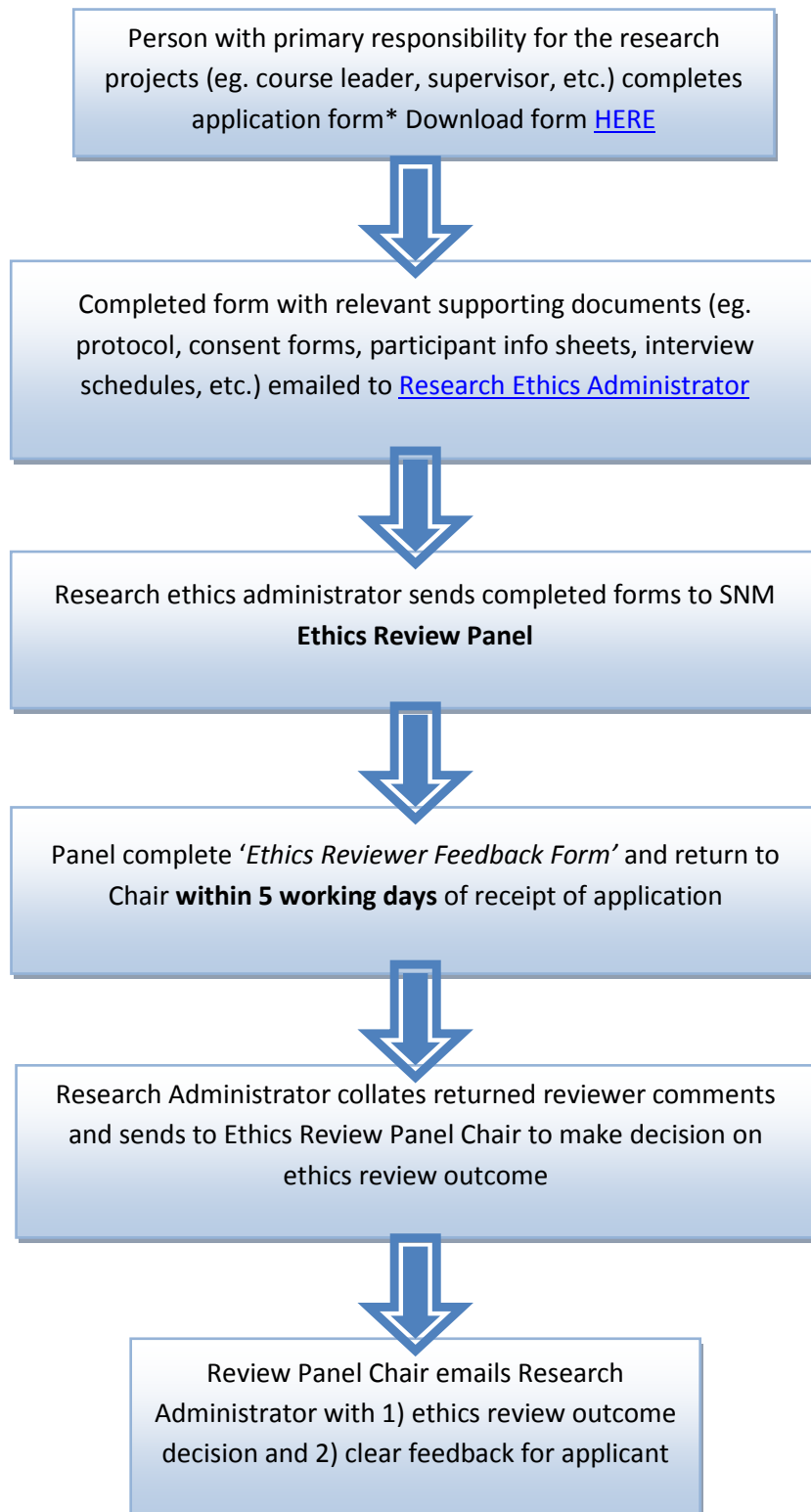
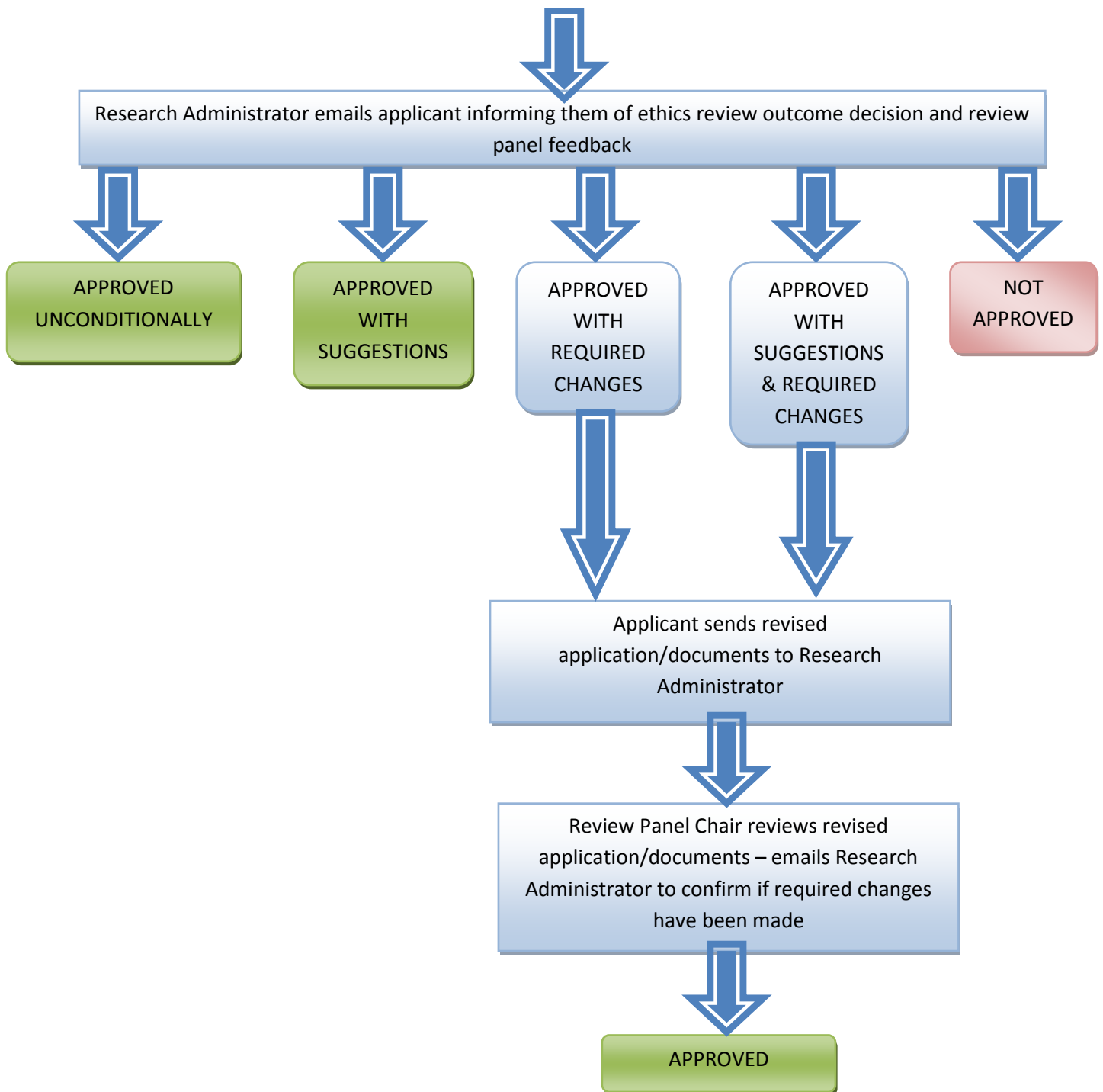


School of Nursing & Midwifery Ethical Review Procedures (SNM-ERP)

Figure 3. SNM-ERP for Generic Research Projects

This procedure applies to [generic research projects](#) based at the School of Nursing & Midwifery, University of Sheffield, undertaken in the UK, and **do not** involve the NHS. The lead researcher (e.g. course leader, principal investigator or supervisor) is responsible for deciding whether ethics approval is required, and which ethics review procedure is applicable. Ethics approval can be obtained via five standard routes, which are outlined in the University's Research Ethics Policy webpage: <http://www.shef.ac.uk/ris/other/gov-ethics/researchethics/approval-procedure>





* For educational purposes, supervisors, course leaders, or research directors, may decide to ask students to complete individual ethics applications, even though such applications do not require individual ethics approval if the projects are covered under the generic application.