



The
University
Of
Sheffield.

The University Of Sheffield

Katy Woodford, Associate Director
International Office



The
University
Of
Sheffield.

Pre-Departure Briefing:

Pakistan 2011





Contents:

- Key dates
What will happen when?
- Before you leave home
Preparations before you travel to Sheffield
- Travel to Sheffield
- Your First Weeks in Sheffield
 - Meet and Greet Scheme
 - Residential Orientation Programme
 - Intro Week
 - Registration
- Accommodation / Finances
- Practical Tips / What to bring with you
- Any questions?





Key Dates.

What
will
happen
when



Key Dates

Meet and Greet Scheme / Manchester Airport Pick-Up

Sunday 11 September – Sunday 18 September 2011 (inclusive)

Residential Orientation Programme for International Students

12th to 17th September 2011 (inclusive)

Intro Week

Monday 19- Sunday 25 September. Registration is on Monday 19 Sept

Students are expected to arrive by **Sunday 18th September** at the latest to be able to attend the Registration event on Monday 19 September.

University accommodation contract holders **MUST** arrive by **Sunday 18th September** at the latest.

Academic teaching begins on **Monday 26th September!**



Key Dates

- Two semesters in the academic year:
 - Autumn Semester 26 September to 17 December 2011
16 January to 4 February 2012
 - Spring Semester 6 February to 31st March 2012
23rd April to 9th June 2012
 - Followed by dissertation for PGR and PGT students
- Total study period: 9 months for **UG** and 12 months for **PGT/PGR** students
- Semesters are separated by vacations:
 - Christmas Vacation 4 weeks (17 Dec 2011 – 15 Jan 2012)
 - Easter Vacation 3 weeks (1st April 2012 – 22nd April 2012)
 - *There is no formal teaching in vacations although most facilities are open.*



The
University
Of
Sheffield.

Before you leave home.

Your checklist



Before you leave home

- Have you met the conditions of your offer?
- Have you **accepted** your offer?
We will not send CAS information until offer has been accepted.
- Have you received your Pre-Arrival Pack?
 - Purple – Welcome to The University of Sheffield: International 2011-12
 - Pink – Registration: The Essential Guide 2011-12
 - Information for New International Students 2011-12



Before You Leave Home

- Health Matters:
 - All international students should be immunised against:
 - Tetanus
 - Polio
 - Meningitis C
 - MMR (Measles, Mumps & Rubella)
 - Dentistry, Nursing, Speech Science and Medicine students also require Hepatitis B vaccinations
 - Tuberculosis **Chest X Ray** (Do this before obtaining a visa)
- Book plane tickets.
- Buy travel/medical insurance to cover your trip to Sheffield and for your stay in the UK when you study for less than 6 months.
- Bring extra passport photographs – they will come in handy!



The
University
Of
Sheffield.

Visas

Where To Get Advice

How The University Can Help



Visas

- PBS (Tier 4): You require 40 points (30 from CAS number, 10 from funds).
- ATAS (Required for some courses.)
- University provides:
 - CAS number after offer becomes UA (and deposits paid, *if required*)
 - Separate scholarship letters (if applicable)
 - Deposit receipt (if deposit has been paid) – Having paid a fee deposit will help your visa application!
- Show financial documentation & other documents from the University.
- **NEVER** come to Sheffield without having sufficient funding to pay for your complete tuition fees and living expenses.



Visas

- CAS
 - Once your status is UA (Unconditional – Accepted) *and you have paid your deposit (if required)* you will receive a **CAS Application E-mail** within 7 days.
 - Follow the instructions and complete the online form, confirming information is correct and notifying us of any incorrect or missing information. **Do this as soon as possible!**
 - We will submit your CAS Application Information to the UKBA (within 5 working days of you completing and submitting the online form).
 - The UKBA will process your information and (if everything is correct) they will issue your CAS number (within 1 working day of receiving your CAS Application Information).
 - We will send you your **CAS Statement E-mail**, with your CAS number (within 2 working days of us receiving your CAS number from the UKBA).
 - You can now use this number to apply for your visa.
- Seek local help from British Council or a university representative (if required).
- For visa amendments while in Sheffield help is available from the University and the Students' Union
 - The University employs a special visa officer to assist students.



The
University
Of
Sheffield.

Travel to Sheffield.



The
University
Of
Sheffield.

Please fly to Manchester Airport





Travel To Sheffield

Manchester Arrivals

- Meet and Greet Scheme (Sunday 11 – Sunday 18 September)
- Direct National Express coach from Manchester Airport to Sheffield - £8.00 (approx)
- Direct train from Manchester Airport to Sheffield (75 minutes) - £19.00 (approx)

London Heathrow Arrivals

- Direct coach to Sheffield from Heathrow Airport - to Sheffield
National Express Airlink coach service – you may not get a seat in September, pre-book online at www.nationalexpress.com (£39.00 approx) – 4/5 hours
- Travel to Sheffield by tube and train (£70-£90) – 5/6 hours
Take the “tube” to King’s Cross/St Pancras Railway Station and then take train from St Pancras Station to Sheffield
- Take National Express coach from Victoria Coach Station



The
University
Of
Sheffield.

Meet And Greet Scheme.

**WELCOME TO
UNIVERSITY OF SHEFFIELD**



Meet And Greet Scheme

Manchester Airport

- Operates from Sunday 11– Sunday 18 September 2011
- It is for students *but* parents/relatives or friends accompanying you can book a place, if they are available.
- Students will greet you in the arrivals hall at Manchester Airport
- Collection from Manchester Airport to Sheffield (08:00 – 18:00 hrs)
- Outside these hours you have to make your own travel arrangements
- Cost: £25 (£10 from Doncaster Sheffield Airport) with £5 discount for prompt payment - Payable on arrival in Sheffield. Parents/relatives and friends must pay the full £25.
- Only for people who pre-book, although you *may* get a seat when you have not booked.
- Apply online at: <http://www.shef.ac.uk/meet/> and do so by **August 31st!**
- Confirmed bookings will receive a confirmation email.



The
University
Of
Sheffield.

Meet And Greet Scheme

Sheffield Railway and Bus Station

- Operates from 11 – 18 September, 11am-6pm
- Students will be waiting in railway station arrivals hall
- All buses from London and London Airports will be met by university representatives
- Free mini-bus to University Campus/Endcliffe Student Village



The
University
Of
Sheffield.

Your First Weeks in Sheffield.





Residential Orientation

Monday 12 – Saturday 17 September

- For international students only!
- **Optional** introduction to University life.
- Allows for easy transition and adjustment and facilitates easy academic orientation. (Introduction to campus, union, university, cultural, social and practical issues.)
- A chance to meet other international students before the crowds arrive.
- Includes University accommodation, breakfast and dinner.
- The cost of the programme is £146 for Sunday arrival (11 September 2011) and £120 for Monday arrival (12 September 2011)



Residential Orientation

Monday 12– Saturday 17 September

- Information sessions, seminars/lectures, campus tours, evening activities, entertainment, day trip to Peak District, international student information fair, social events and a formal dinner with VIP guests. **Read page 52 in the Purple booklet for more information.**
- Deadline to apply is **Tuesday 31st August**
- It is a 'First-Come, First-Served' basis for bookings!
- Extra nights can be included at a cost of £24 per night on B&B basis, beginning on Thursday September 9th. You can book online at: onlineshop.shef.ac.uk/
- You **MUST** to arrive on **Monday 12 September** at the latest, in order to participate!



Intro Week (Fresher's Week)

Monday 19 – Sunday 25 September

- For all new students (both UK and international).
- Academic introductions, departmental meetings, registration with university, department, CICS, Library, Health Service Interviews, etc. The Students' Union also ensures it is a very social week with lots of fun events on campus, live music, discos, bbq, clubs and societies fair, sports fair, fresher's fair, etc.
- Attend your Introductory Academic Meeting. They should contact you with details of the date/time, but if you have not received it before coming be sure to contact them.
- Registration is MANDATORY. **For the date you must attend, please see the Centre Pages of the Pink booklet**). You must attend the Introductory Academic Meeting first.
- International Student Fair (your chance to join new societies and sports clubs) Like the Pakistan Student Society.

www.sheffield.ac.uk/introweek



The
University
Of
Sheffield.

Student Accommodation.



Student Accommodation

3 types of student accommodation available to students:

University owned accommodation (booked via university)

- Endcliffe Student Village (3,500 en-suite or shared facilities) – 1.5 miles from campus
- Ranmoor Student Village (1,000 en-suite, shared facilities, family and studio rooms) – 1.5 mile from campus

Managed Partnership accommodation (booked via university)

- City and Central Campus Halls of Residence (1,050 en-suite, shared facilities, deluxe rooms) - 0.5 miles from campus

Private sector accommodation (booked privately, without university help)

- Privately owned Halls of Residence or Student Houses



University Accommodation

Self-catered accommodation – Halls of Residence (US or private owned)

- Individual study bedroom with private shower and toilet or shared facilities
- Cluster of flats shared with approx 3-11 other students
- Single or mixed gender accommodation (as requested by you)
- You must provide your own meals, although 'EatwithUS' meal card is optional
- Includes all bills, contents insurance, and 10Mbps wired or Broadband wireless internet access. *(In non-university Halls of Residence internet access comes at a separate charge, as well as one university accommodation.)*
- Contract length **42 weeks** (and some 51 week contracts are available at various halls)

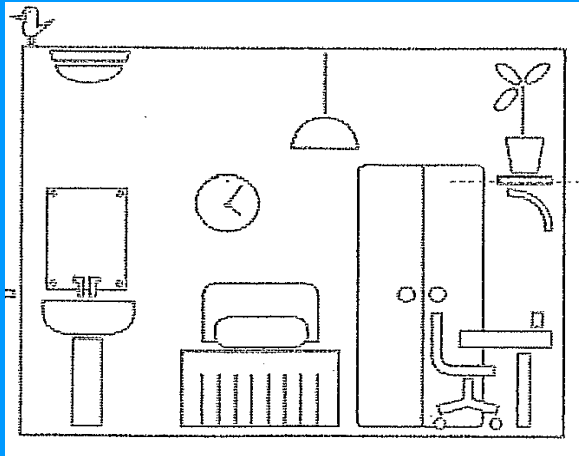
Catered accommodation - Halls of Residence

- As above but...
- Very popular with first year students
- Meals provided (breakfast & dinner) – 'EatwithUS' meal card.
- Contract length **42 weeks** (some 51 week contracts are available)

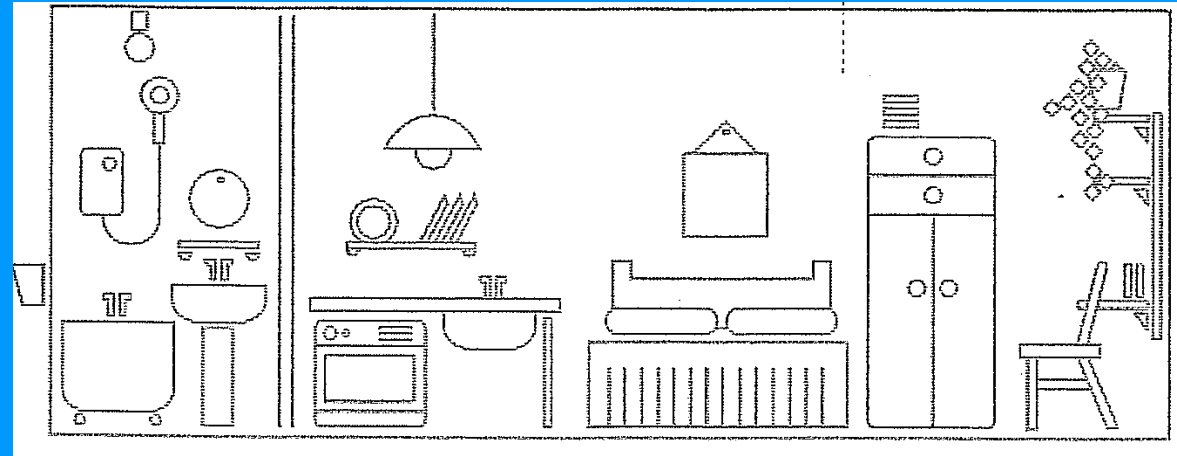
General: All food allowances do not cover Christmas and Easter vacations !



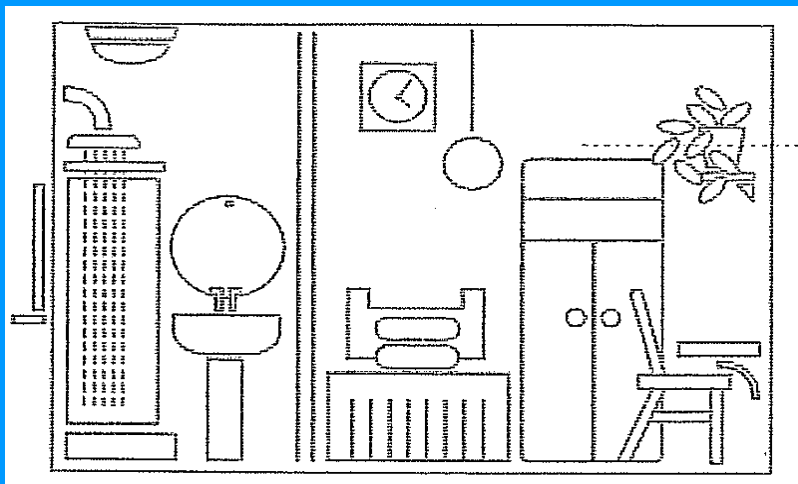
Standard Accommodation



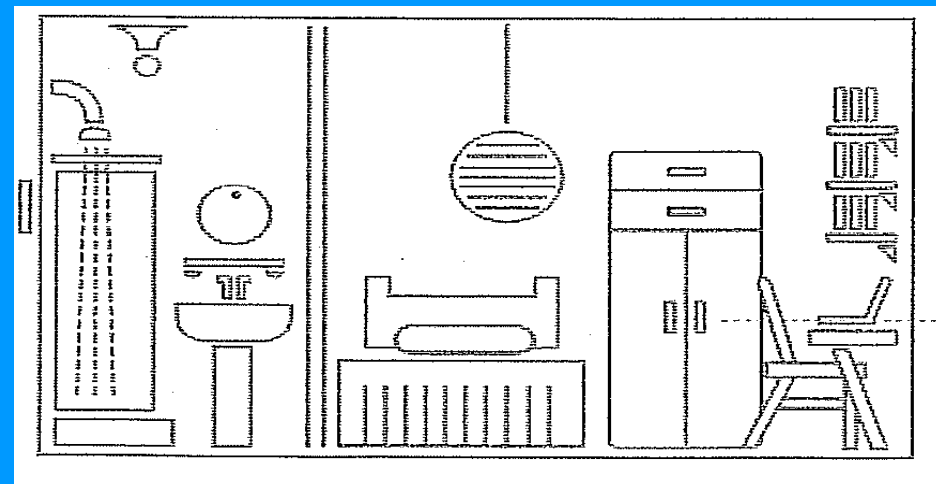
Studio Apartment



En-suite Accommodation



Deluxe Accommodation





Accommodation Guarantee

UNDERGRADUATE

- Need to have selected Sheffield as CF/UF by **6 July**
- Apply for accommodation by **31 August** and complete form correctly, as soon as you have selected us as your Firm Choice. **Apply online!**
- We will not allocate a room until offer is **UA and student has Visa.**

POSTGRADUATE

- Accept conditional/unconditional offer by **6 of August**
- Apply for accommodation by **31 August** and complete form correctly, as soon as you have accepted your offer. **Apply online!**
- Return your confirmation slip!

The University will begin allocating accommodation in mid-July and will continue through August and September (for all students)!



Accommodation Guarantee

- Check Accommodation website: <http://www.sheffield.ac.uk/accommodation>
(Choose 'Prospective Students' and then the 'International Students' link on left.)
- Apply online: **Check above webpage for link.**
- Can't apply online? **You can download paper forms from the above website as well!**
- Haven't applied or forgot to apply? **Don't worry, there is plenty private sector student accommodation available in Sheffield. Check out the **PropertywithUS** office in Students' Union.**



Private Sector Accommodation

2 Types of private sector student accommodation

Halls of Residence (managed and owned by private developers)

- All city centre based (0.5 miles from campus)
- Configuration same as University Halls of Residence
- All Self-Catering, no meals included
- Cluster of flats shared with approx 3-11 other students
- Single or mixed gender accommodation (as requested by you)
- Rent includes water, electricity but **NOT** contents insurance and internet.

Student Houses (managed and owned by a private landlord/landlady)

- Based around the city, most notably the areas of Crookes and, Upperthorpe and Broomhill



Private Sector Student Accommodation

- Good range and **plenty** of private accommodation available in Sheffield.
- Contract with private landlord or lettings agency.
- You will pay a monthly rent and on top of this you will pay bills (electricity, water, gas), phone/internet, and contents insurance.
- You have no say in who you live with unless you apply as a group.
- Help available from the University in finding accommodation once you're in Sheffield via the Students' Union **PropertywithUS** office.
- Private sector accommodation **cannot** be organised in advance of your arrival in Sheffield.
- Therefore, NEVER sign a contract or agree a deal before you arrive in Sheffield!

www.accommodationforstudents.com/sheffield
(Overview of privately owned student Halls of Residence)



Accommodation Deposit

- Once applied wait for instructions to be emailed to you by ACS department.
- A deposit of £150 is required to reserve your accommodation.
- Pay up to 7 days after receipt of your accommodation contract by:
 - Credit card by phone or online
 - Bank transfer
- Deposit is returned when you leave your room at the end of your contract.
- Pick up your key and move into your accommodation by date given by Accommodation Office! This will be either **Saturday 18** or **Sunday 19 September**.
- If this is not possible to arrive by the 19th you **MUST** contact the ACS!
- Any problems or missed your flight? Contact ACS! If we don't hear from you, your room will be given to someone else and you lose your deposit.



Temporary Accommodation

For parents, relatives and friends

- There is a good range of guest houses, B&B & hotels that your parents, relatives, and friends can stay at if they arrive with you in Sheffield: www.yorkshiresouth.com/stay
- You must arrange temporary accommodation if you have no other arrangements BEFORE you come to Sheffield!
- The University has a limited number of B&B rooms the week s prior to the beginning of the term: <http://onlineshop.shef.ac.uk> - *this can only be used by students (no family, relatives, or friends).*



The
University
Of
Sheffield.





The
University
Of
Sheffield.





The
University
Of
Sheffield.

Finances

Living expenses

Fees

Part-time jobs





Living Expenses

UNDERGRADUATE

9 months = £5,600

POSTGRADUATE

12 months = £7,500

This covers all expenditure apart from tuition fees



Tuition Fees (Payment options)

1. Part or full payment before visa application

A receipt will be issued as soon as payment has gone into the University tuition fee bank account.

Overseas students should pay a deposit as high as possible before they apply for their visa (min. £2,000), this will help with your visa application.

2. You can pay your tuition fees in 2 or 4 instalments.

3. Remainder of first instalment (50% or 25% of tuition fees, depending on instalment plan, minus deposit already paid) is payable during registration.

4 Four instalments payable on:

01 Oct 2011 - 01 Dec 2011 - 01 Feb 2012 - 01 Apr 2012



Tuition Fees (Payment options)

- All payments can be made by:
 - Credit card
 - Bank transfer
 - Bank draft
- Payments can only be accepted in British Pound Sterling



Opening a Bank account

- **Opening an account can take several weeks** so bring enough funding for first few weeks and to pay tuition and accommodation fees.
- You can open an account at most high street banks in Sheffield (HSBC, Santander, Natwest, Yorkshire Bank, Lloyds-TSB, Coop, Halifax, Barclays, RBS).
- Banks will promote their student account packages at our Fresher's Information Fair during Intro week.
- The University of Sheffield will provide you with letters for all of the major banks during Registration Week, to assist with your applications.
- Check if your current bank allows you online access to your funds while in the UK and/or allow access to cash via ATM machines in the UK.



Opening a Bank account

- When opening a UK account choose carefully (Current/Student Account, Debit Card)



- To open an account you need
 - Passport
 - Proof of address
 - Proof of student status (certifying letter or letter issued by SSiD, also available during Residential Orientation Programme and Registration Week)



Part-time work

- International students can work up to 20 hours per week during their studies
- We recommend 10-12 hours max. per week
- Visit Student Union Job shop / Job Agencies
- University provides support to bring you into contact with potential employers, e.g. Graduate Recruitment Fairs



The
University
Of
Sheffield.

What to Bring

The essentials you need
to bring to Sheffield





Essentials for hand luggage

- All original documentation and letters from the University
- Accommodation confirmation letter (if you have one)
- Medical certificates / visa documents
- All your original mark sheets, transcripts and certificates
- Purple and pink booklets (for last minute queries and contact numbers)
- Bank statements, a sponsor's letter or bank draft.
- Cash and/or travellers cheques for first few days
- Your passport
- Valuables, medicines



Other Essentials

- Personal possessions, i.e. family photos
 - Contact email addresses and phone numbers
 - Warm jumpers/coat
 - Good pair of shoes
 - Laptop (if you have one) and adaptor
- There are Wifi Access Points throughout the campus



Electricity

- UK Mains Voltage is **230V**
- Ensure you obtain an adaptor if you bring any electrical equipment.
- Most electrical equipment has a transformer (i.e. laptop power supplies) that can cope with 110-240V but please check.





What to buy on arrival

- There's no need to bring everything you own!
(there are shops in Sheffield you see ...)
- Airlines will charge for overweight
- Bedding can be provided by the University or purchased in Sheffield
- Cooking equipment and utensils can be purchased in Sheffield
- Don't carry books for your studies (second-hand book fair, Amazon, Library)
- Some foodstuffs cannot be imported into the UK
(there are many Asian shops in Sheffield selling authentic products and produce)



The
University
Of
Sheffield.

When you arrive

Practical tips on what to do when you arrive



When You Arrive

- Remember the 3 most important words to use in the UK

“Please” & “Thank You”

- Please call home immediately after you’ve arrived in Sheffield .
(UK data protection legislation prevents us from informing relatives about your whereabouts)
- In front of the luggage belt 1 at Manchester Airport there is a machine that issues calling cards



When You Arrive

- Consider ordering a pre-paid international calling card or buy one in Sheffield

www.planetphonecards.com & www.eurocallingcards.com

- Bring your mobile from home and use a UK sim card.

(Please check if your phone can be used with foreign sim cards. If so, a UK pay-as-you-go sim card in the UK is about £5-£10)

- Use Skype to stay in touch with the home-front, free of charge





The
University
Of
Sheffield.



Pakistani Students in Sheffield.



Pakistani students in Sheffield

- Pakistan Society have a stall during Intro Week
- Society organises a Welcome Party in early October
- Social events throughout the year including Food Evening, International Cultural Evening
- Sheffield has many Pakistani restaurants and takeaways plus Asian supermarkets located near the University
- Official University of Sheffield Pakistani Student Community Facebook page



University Medical Centre

- Medical care covered as part of the NHS
- Ensure you submit the medical questionnaire before arrival in Sheffield
- During Intro Week you will attend a health interview/medical registration at the university Health Centre
- Ensure you bring name, address and contact details of your current doctor and next of kin.
- Bring details on any medical conditions, medicine
- Difficult (if not impossible) to find a NHS dentist, hence get a dental check-up before you arrive



The
University
Of
Sheffield.

University Medical Centre .



Climate

- The temperature in Sheffield can be 25 – 30 degrees Celsius (June to August) and below freezing in the winter months (November to March).
- In spring the temperature is about 12 degrees Celsius (April – May)
- You can expect snow at some stage during winter!
- You will have to get used to the UK weather but in the end you'll probably learn to appreciate it.



The
University
Of
Sheffield.

Where can I download all the information discussed today?

<http://www.sheffield.ac.uk/international/welcome>



Web Chat

Please note the Pakistan team will be hosting a web chat on different topics including pre-departure soon.

For further information please go to our Pakistan home page.

<http://www.shef.ac.uk/pakistan>





Questions?

- Carefully **read** the Purple and Pink booklets which you should have received and use check list page 4 (Pink booklet) if you have any further questions please contact the Pakistan Team,

Mrs Katy Woodford

katy.woodford@sheffield.ac.uk

Miss Ruth Lauener

ruth.lauener@sheffield.ac.uk

Mr. Rasshad Khan

rasshad.khan@sheffield.ac.uk



The
University
Of
Sheffield.

See You Soon In Sheffield