



The  
University  
Of  
Sheffield.

Management  
School.



# MSc in Management (Creative and Cultural Industries).

## MSc in Management (Creative and Cultural Industries)

This 12 month programme provides you with the essential knowledge and critical skills you need to help you become a successful manager in the creative and cultural sector. The course draws on the knowledge and workplace experience of a talented group of academics and combines the latest thinking in management theory with the practical and specialist skills that you need within your chosen field. You will gain a good understanding of the business demands of managing creative enterprises and cultural organisations within the modern globalised world.

In the first semester you will study core modules in people management, finance and marketing as well as spending time developing the personal and problem-solving skills you will need as a manager. During the Spring semester you will consolidate your knowledge with a core module in strategic management but also have the opportunity to choose three electives from a range of options including marketing creative and cultural industries, cultural leadership and music management environments (See options below). During your final semester you will submit a dissertation on a topic which has stimulated your interest.

### Profile of typical candidate

This programme is aimed at recent graduates with a good degree in any subject and who wish to develop a good understanding of management principles and practice. You may be a recent graduate planning a career in management or a professional looking to move your career forward in the creative and cultural sectors. Alternatively, you could be someone from a creative discipline – a dancer, musician, artist – who is looking to extend the employment opportunities open to you. Our Careers Service is able to provide excellent support for Masters students and will help you develop the skills you need to progress your career. They are also able to put you in touch with a variety of different employers.

### Entry specification

You will need a good degree in any subject (2:1 or higher) or approved professional qualification combined with a desire to learn about management principles and practices. You do not need prior management experience. Our normal English requirement for overseas students is IELTS 7.0 (with no less than 6 in each part). If you are unable to take IELTS we will consider TOEFL 600 with TWE 4.5 (paper-based) or TOEFL 260, TWE 5.0 (computer-base) or equivalent.

### Course content

Two taught semesters, followed by a dissertation.

### Core modules

- Managing People in Organisations
- Accounting and Financial Management
- Marketing
- Strategic Management
- Introduction to the Creative and Cultural Industries
- Research Methods

### Optional modules (choose 3)

- Public Policy through Leisure
- Music Management Environments
- Cultural Leadership and Management
- Marketing and the Creative and Cultural Industries

### Teaching

- Lectures
- Seminars
- Case Studies
- Group work for collaborative learning
- Web based discussions groups

### Assessment

- Individual Assignments
- Group Projects
- Examinations
- Management Project

### Certificate/Diploma

Students who successfully complete the first semester but do not proceed receive the PG Certificate. Those who pass both semesters' modules do not complete the Management Project receive the Diploma.

**Length of course:**  
12 months

### Mode of delivery:

Full-time

### Start date:

September each year

### Fees 2010/2011

UK/EU: £6,770

International: £13,390

### Scholarships

There are a number of scholarships which Management students may be eligible for. Go to [www.shef.ac.uk/international/enquiry/money/scholarships.html](http://www.shef.ac.uk/international/enquiry/money/scholarships.html)

### Apply

You can apply online or by post. For further information please visit [www.shef.ac.uk/postgraduate/taught/apply](http://www.shef.ac.uk/postgraduate/taught/apply)

### Contact for enquiries:

Hilda Betts  
+ 44 (0) 114 222 2181

Email:  
[H.betts@sheffield.ac.uk](mailto:H.betts@sheffield.ac.uk)

Find out more about this course and the School of Management

[www.sheffield.ac.uk/management/postgraduates](http://www.sheffield.ac.uk/management/postgraduates)



The  
University  
Of  
Sheffield.

Management  
School.



# MSc in International Management & Marketing.

## MSc in International Management & Marketing

The MSc in International Management & Marketing is designed for graduates from any disciplinary background. Accredited by CMI (Chartered Management Institute\*), this programme provides you with the knowledge and skills for an international career in management or marketing. The programme consists of nine modules with a balance between international management, marketing and management, as well as a project dissertation.

### Profile of typical candidate

This programme is likely to appeal to graduates from any disciplinary background wishing to gain knowledge and a critical appreciation of international management, marketing and management per se. It has been carefully designed to provide alternative pathways suitable for those who have, or have not, studied business previously, who wish to develop an international career in management or marketing.

### Entry Specification

A minimum 2:1 honours degree (or equivalent), or an approved professional qualification. Our normal English requirement for overseas students is IELTS 7.0 (with not less than 6 in each part). We will also consider those with TOEFL 600 with TWE 4.5 (paper-based) or TOEFL 260, TWE 5.0 (computer-based) or equivalent.

### Course content

Two taught semesters followed by a project dissertation.

### Modules

- International Management
- International Business Strategy
- Marketing Management
- International Marketing
- Branding
- Sales & Distribution Management
- Research Methods

### Optional modules

- European Business\*\*
- Theories of Intercultural Communication
- Business and the Economy of Japan
- Contemporary Chinese Business and Management
- Negotiation and Intercultural Communication
- Managing People in Organisations
- Operations and Supply Chain Management
- Accounting and Financial Management

### Teaching

- Lectures
- Seminars
- Case Studies
- Group work for collaborative learning
- Web-based discussion groups

### Assessment

- Individual assignments
- Group projects
- Examinations
- Dissertation

### Chartered Management Institute Accreditation

\* Students completing this programme will automatically be awarded a CMI Diploma, in addition to the MSc, and be able to work towards the coveted status of Chartered Manager.

\*\* European Business is only available for those students who have already studied business.

### Length of course:

12 months

### Mode of delivery:

Full-time

### Start date:

September each year

### Fees 2010/2011

UK/EU: £6,770

International: £13,390

### Scholarships

There are a number of scholarships which Management students may be eligible for. Go to [www.shef.ac.uk/international/enquiry/money/scholarships.html](http://www.shef.ac.uk/international/enquiry/money/scholarships.html)

### Contact for enquiries:

Hilda Betts  
+ 44 (0) 114 222 2181

Email:  
[H.betts@sheffield.ac.uk](mailto:H.betts@sheffield.ac.uk)

Find out more about this course and the School of Management

[www.sheffield.ac.uk/management/postgraduates](http://www.sheffield.ac.uk/management/postgraduates)



The  
University  
Of  
Sheffield.

Management  
School.



## MSc in Marketing & Management

The MSc in Marketing & Management is designed for graduates from any disciplinary background. Accredited by CMI (Chartered Management Institute\*), this programme provides you with the knowledge and skills for a career in marketing or management. The programme consists of nine modules (5 in marketing, 4 in management) and a project dissertation.

### Profile of typical candidate

This programme is likely to appeal to graduates from any disciplinary background wishing to gain knowledge and a critical appreciation of the principles of both marketing and management. It is designed to assist graduates who wish to pursue a career in either of the two disciplines.

### Entry Specification

A minimum 2:1 honours degree (or equivalent), or an approved professional qualification. Our normal English requirement for overseas students is IELTS 7.0, albeit strong candidates with 6.5 will be considered (with not less than 6 in each part). We will also consider those with TOEFL 600 with TWE 4.5 (paper-based) or TOEFL 260, TWE 5.0 (computer-based) or equivalent.

### Course content

Two taught semesters followed by a project dissertation

### Modules

- Marketing Management
- International Marketing
- Marketing in the Creative & Cultural Industries
- Branding
- Sales & Distribution Management
- Managing People in Organisations
- Operations and Supply Chain Management
- Research Methods

### Optional modules

- International Management
- International Business Strategy
- Strategic Management

### Teaching

- Lectures
- Seminars
- Case Studies
- Group work for collaborative learning
- Web-based discussion groups

### Assessment

- Individual assignments
- Group projects
- Examinations
- Dissertation

### Certificate/Diploma in Marketing & Management

Students who successfully complete the first semester but do not proceed, will receive the PG Certificate. Those who pass both semesters' modules, but do not complete the dissertation receive the PG Diploma.

\* Students completing this programme will automatically be awarded a CMI Diploma, in addition to the MSc, and be able to work towards the coveted status of Chartered Manager.

### Length of course:

12 months

### Mode of delivery:

Full-time

### Start date:

September each year

### Fees 2010/2011

UK/EU: £6,770

International: £13,390

### Scholarships

There are a number of scholarships which Management students may be eligible for. Go to [www.shef.ac.uk/international/enquiry/money/scholarships.html](http://www.shef.ac.uk/international/enquiry/money/scholarships.html)

### Contact for enquiries:

Hilda Betts  
+ 44 (0) 114 222 2181

Email:  
[H.betts@sheffield.ac.uk](mailto:H.betts@sheffield.ac.uk)

Find out more about this course and the School of Management

[www.sheffield.ac.uk/management/postgraduates](http://www.sheffield.ac.uk/management/postgraduates)



The  
University  
Of  
Sheffield.

Management  
School.



MSc in  
Occupational  
Psychology.

## MSc in Occupational Psychology

The MSc in Occupational Psychology is recognised by the British Psychological Society (BPS) as contributing towards Chartered Psychologist status and registration by the Health Professions Council (HPC) as an Occupational Psychologist. The course has been running for over 30 years and has an international reputation.

The course will increase your understanding of occupational psychology, develop a critical appreciation of existing theory and practice and help you acquire the skills necessary for research and practice as an occupational psychologist. The course is taught by staff of the Institute of Work Psychology (IWP), which evolved from the Social and Applied Psychology Unit, established by the Medical Research Council in 1968. IWP is a centre of excellence with one of the largest groups of organisational psychology academics in Europe and a reputation for world-class research. We are committed to increasing understanding of occupational well-being and effectiveness and identifying factors leading to their enhancement. We work with a wide range of public and private sector organisations and act as an advisory body to many practitioners, professional bodies and policy-makers. You will benefit from being part of our dynamic research-active environment.

### Profile of typical candidate

This programme is likely to appeal to graduates with an interest in careers in business consultancy, human resource management or organisational research. Work experience is desirable but not essential. Experience in human resources is beneficial but any experience relating to issues around people in the workplace is valuable.

### Entry specification

A 2:1 honours degree in Psychology or a related discipline. You should also be eligible for the British Psychological Society's (BPS) Graduate Basis for Chartership (GBC). If you're not eligible, you can apply for the MSc in Work Psychology. To find out whether your undergraduate degree makes you eligible for GBC go to ([www.bps.org.uk](http://www.bps.org.uk)) or check with your University. Overseas candidates will need to contact the BPS directly to find out about accreditation.

Our standard English requirement for overseas students is IELTS 7.0 (with no less than 6 in each part). If you are unable to take IELTS we will consider TOEFL 617 with 4.5 on the TWE, which must be taken separately, or 260 in the computer-based test with 5 in the TWE, or iBT 100, with a minimum of 20 in the writing component and no lower than 19 in all other components. Cambridge Certificate of Proficiency in English (Grades A, B or C) or NEAB University Entrance Test in English (Pass).

### Course content

Two taught semesters, followed by a dissertation. Course delivery is both participative and interactive. Case studies and workshops ensure that learning is active and up-to-date. You will receive a thorough grounding in research methodology, both quantitative and qualitative, and the use and interpretation of statistical data. Considerable emphasis is placed on student-centred learning, and on a student-led research project, which is usually conducted with outside organisations.

### Core modules

- Personnel Selection and Development
- Training and Well-being
- Organisational Behaviour
- Work Systems and Human Factors
- Research Methods
- Statistics
- Practitioner Skills and Professional Issues
- Career Workshops
- Organisational Research Project

Project opportunities can be generated by students or through IWP's extended business networks. These may sometimes have bursaries attached. Projects provide the chance for students to apply their knowledge to real-world issues and develop their organisational skills. We run a number of practical workshops focused on developing skills in areas such as presentations, SPSS statistical

software and information management. We also provide training to acquire the BPS Level A Certificate in Psychometric Testing.

### Additional features

- Lively programme of external speakers. Recent examples include Kaisen Consulting, Saville & Holdsworth Ltd, Human Potential Accountancy, ARUP, Towers Perrin, Metropolitan Police, Health & Safety Executive, Department of Work and Pensions. The talks are designed to provide students with a fuller understanding of a range of practitioner roles.
- Career Development Workshops
- Dedicated computer room and access to our in-house library of key books and journals.
- Opportunities to engage with IWP's current research activities, including seminars from national and international figures.
- Course numbers are limited to 30 to provide the optimal small-group learning experience.

### Teaching

- Lectures
- Seminars
- Case Studies
- Group work for collaborative learning
- Web-based discussions groups
- Assessment
- Individual assignments
- Group projects
- Examinations
- Dissertation

**Contact for prospectus or general enquiries:**  
Bekki Kendrick + 44 (0) 114 222 3282  
Email: [r.kendrick@sheffield.ac.uk](mailto:r.kendrick@sheffield.ac.uk)



The  
University  
Of  
Sheffield.

Management  
School.



MSc in  
Work  
Psychology.

## MSc in Work Psychology

The MSc Course in Work Psychology (introduced 2008) provides a route for those students without a BPS-recognised psychology degree (i.e., those who do not have the Graduate Basis of Chartership – see [www.bps.org.uk/](http://www.bps.org.uk/)). The content and assessment of this course is exactly the same as the Msc in Occupational Psychology; the difference is that the Work Psychology qualification is not accredited by the BPS and therefore cannot be used for their chartership route. The course is taught by staff of the Institute of Work Psychology (IWP), which evolved from the Social and Applied Psychology Unit, established by the Medical Research Council in 1968.

IWP is a centre of excellence with one of the largest groups of organisational psychology academics in Europe and a reputation for world-class research. We are committed to increasing understanding of occupational well-being and effectiveness and identifying factors leading to their enhancement. We work with a wide range of public and private sector organisations and act as an advisory body to many practitioners, professional bodies and policy-makers. You will benefit from being part of our dynamic research-active environment.

### Profile of typical candidate

This programme is likely to appeal to graduates with an interest in careers in business consultancy, human resource management or organisational research. Work experience is desirable but not essential. Experience in human resources is beneficial but any experience relating to issues around people in the workplace is valuable

### Entry specification

A 2:1 honours degree with significant coverage of psychology, research methods and statistics topics.

NOTE: This qualification is not recognised by the British Psychological Society and therefore cannot be used for applying for chartership with the BPS in the UK. Our standard English requirement for overseas students is IELTS 7.0 (with no less than 6 in each part). If you are unable to take IELTS we will consider TOEFL 600 with 4.5 on the TWE, which must be taken separately, or 260 in the computer-based test with 5 in the TWE, or iBT 100, with a minimum of 20 in the writing component and no lower than 19 in all other components. Cambridge Certificate of Proficiency in English (Grades A, B or C) or NEAB University Entrance Test in English (Pass).

### Course content

Two taught semesters, followed by a dissertation. Course delivery is both participative and interactive. Case studies and workshops ensure that learning is active and up-to-date. You will receive a thorough grounding in research methodology, both quantitative and qualitative, and the use and interpretation of statistical

data. Considerable emphasis is placed on student-centred learning, and on a student-led research project, which is usually conducted with outside organisations.

### Core modules

- Personnel Selection and Development
- Training and Well-being
- Organisational Behaviour
- Work Systems and Human Factors
- Research Methods
- Statistics
- Practitioner Skills and Professional Issues
- Career Workshops
- Organisational Research Project

Project opportunities can be generated by students or through IWP's extended business networks. These may sometimes have bursaries attached. Projects provide the chance for students to apply their knowledge to real-world issues and develop their organisational skills. We run a number of practical workshops focused on developing skills in areas such as presentations, SPSS statistical software and information management. We also provide training to acquire the BPS Level A Certificate in Psychometric Testing.

### Additional features

- Lively programme of external speakers. Recent examples include Kaisen Consulting, Saville & Holdsworth Ltd, Human Potential Accountancy, ARUP, Towers Perrin, Metropolitan Police, Health & Safety Executive, Department of Work and Pensions. The talks are designed to provide students with a

fuller understanding of a range of practitioner roles.

- Career Development Workshops
- Dedicated computer room and access to our in-house library of key books and journals.
- Opportunities to engage with IWP's current research activities, including seminars from national and international figures.
- Course numbers are limited to 30 to provide the optimal small-group learning experience.

### Teaching

- Lectures
- Seminars
- Case Studies
- Group work for collaborative learning
- Web-based discussions groups

### Assessment

- Individual assignments
- Group projects
- Examinations
- Dissertation

### Contact for prospectus or general enquiries:

Bekki Kendrick + 44 (0) 114 222 3282  
Email: [r.kendrick@sheffield.ac.uk](mailto:r.kendrick@sheffield.ac.uk)



The  
University  
Of  
Sheffield.

Management  
School.



# MSc in Management (Health Services Management).

## MSc in Management (Health Services Management)

Become a health services manager of the future with this specialist course. You'll learn general management techniques and develop your understanding of organisational management preparing you for a career in the rewarding but challenging area of health services management.

### Profile of typical candidate

This programme is likely to appeal to graduates wanting to pursue a management career within health services.

### Entry Specification

A 2:1 honours degree or better, or approved professional qualification.

Our standard English requirement for overseas students is IELTS 7.0 (with no less than 6 in each part). If you are unable to take IELTS we will consider TOEFL 600 with TWE 4.5 (paper-based) or TOEFL 260, TWE 5.0 (computer-based) or equivalent.

### Course content

Two taught semesters, followed by a dissertation.

### Core modules

- Accounting & Financial Management
- Managing People in Organisations
- Marketing Management
- Operations and Supply Chain Management
- Strategic Management
- Research Methods
- International Health: Systems and Policy
- Health Services Management
- Health Core Information

### Teaching

- Lectures
- Seminars
- Case Studies
- Group work for collaborative learning
- Web-based discussion groups

### Assessment

- Individual assignments
- Group projects
- End-semester examinations
- Dissertation

### Certificate/Diploma in Management (Health Services Management)

Students who successfully complete the first semester but do not proceed receive the PG Certificate. Those who pass both semesters' modules but do not complete the dissertation receive the Diploma.

vv

### Contact for enquiries:

Karen Hector + 44 (0) 114 222 3379

Email: [K.Hector@sheffield.ac.uk](mailto:K.Hector@sheffield.ac.uk)

Find out more about this course and the School of Management

[www.sheffield.ac.uk/management/postgraduates](http://www.sheffield.ac.uk/management/postgraduates)



The  
University  
Of  
Sheffield.

Management  
School.



# MSc in Human Resource Management.

## MSc in Human Resource Management

Accredited by the Chartered Institute of Personnel and Development

You will receive general training; human resource management and specific research-led teaching to help you understand human resource management in its strategic organisational and financial contexts. You will develop new business knowledge and learn new professional skills which can open up a wider range of job opportunities or help you into a new career.

### Profile of typical candidate

This programme is likely to appeal to graduates in any discipline wanting to enter or progress in the field of Human Resource Management.

### Entry Specification

A 2:1 honours degree, or approved professional qualification.

Our standard English requirement for overseas students is IELTS 7.0 (with no less than 6 in each part). If you are unable to take IELTS we will consider TOEFL 600 with TWE 4.5 (paper-based) or TOEFL 260, TWE 5.0 (computer-based) or equivalent.

### Course content

Two taught semesters, followed by a dissertation.

### Core modules

- Accounting & Financial Management
- Managing People in Organisations
- Professional Development
- Industrial Relations
- Employee & Organisational Development
- International Human Resource Studies
- Employee Performance Management
- Strategic Management
- Research Methods

### Teaching

- Lectures
- Seminars
- Case Studies
- Group work for collaborative learning
- Web-based discussion groups

### Assessment

- Individual assignments
- Group projects
- Examinations
- Management Project

### Certificate/Diploma in Human Resource Management

Students who successfully complete the first semester but do not proceed receive the PG Certificate.

Those who pass both semesters' modules but do not complete the Management project receive the Diploma.

### Contact for enquiries:

Hilda Betts + 44 (0) 114 222 2181

Email: [H.betts@sheffield.ac.uk](mailto:H.betts@sheffield.ac.uk)

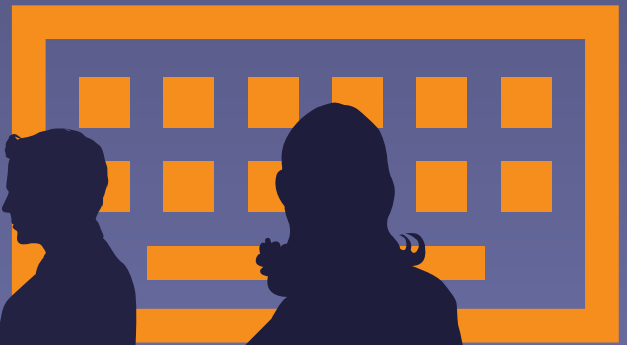
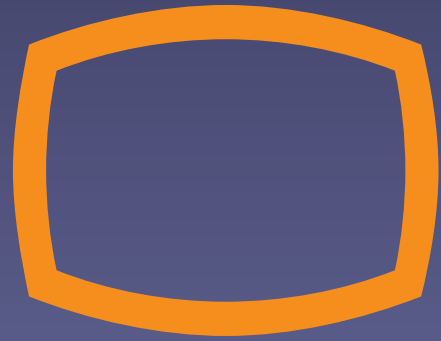
Find out more about this course and the School of Management

[www.sheffield.ac.uk/management/postgraduates](http://www.sheffield.ac.uk/management/postgraduates)



The  
University  
Of  
Sheffield.

Management  
School.



# MSc in Information Systems Management.

## MSc in Information Systems Management

This 12 month programme provides you with the essential knowledge and critical skills you need to help you become a successful manager. The course draws on the knowledge and workplace experience of a talented group of academics from both the Management School and the internationally renowned Department of Information Studies. The programme combines the latest thinking in management theory with the practical skills that you need in the ground. You will gain a good understanding of how IT and information systems operate and their role in controlling and driving organisations forward.

### Profile of typical candidate

This programme is suitable for candidates who want to develop their managerial understanding of and skills in management, both from a generalist view and from an information perspective.

### Entry Specification

A good second-class honours degree, or approved professional qualification.

Our standard English requirement for overseas students is IELTS 7.0 (with no less than 6 in each part). If you are unable to take IELTS we will consider TOEFL 600 with TWE 4.5 (paper-based) or TOEFL 260, TWE 5.0 (computer-based) or equivalent.

### Course content

Two taught semesters, followed by a dissertation.

### Core modules

- Information Systems Project Management
- Information Systems Modelling
- Information Systems and the Information Society
- Managing People in Organisations
- Marketing Management
- Operations and Supply Chain Management
- Strategic Management
- Research Methods and Dissertation Preparation

### Optional modules (you choose two)

- E-Business and E-Commerce
- Educational Informatics
- Business Information
- Healthcare Information
- Human Computer Interaction and User Interface Design
- Electronic Publishing
- International Business Strategy

### Teaching

- Lectures
- Seminars
- Case Studies
- Group work for collaborative learning
- Web-based discussion groups

### Assessment

- Individual assignments
- Group projects
- End-semester examinations
- Dissertation

### Certificate/Diploma in Information Systems Management

Students who successfully complete the first semester but do not proceed receive the PG Certificate. Those who pass both semesters' modules but do not complete the dissertation receive the Diploma.

### Contact for enquiries:

Hilda Betts + 44 (0) 114 222 2181

Email: [H.betts@sheffield.ac.uk](mailto:H.betts@sheffield.ac.uk)

Find out more about this course and the School of Management

[www.sheffield.ac.uk/management/postgraduates](http://www.sheffield.ac.uk/management/postgraduates)



The  
University  
Of  
Sheffield.

Management  
School.

a 你好 dobré ráno goedendag hello Salaa  
kum bonjour Guten Tag shalom buon gior  
はよう ございます namaskaram ho 你好  
bré ráno goedendag hello balaam rekum  
njour Guten Tag shalom buon gior おは  
ございます namaskaram ho 你好 é rá  
dendag holo nam Ale he Gu  
shalom buon ráno おまっ ます  
naskkar ho 你好 do ráno denc



# MSc in Management (International Business).

## MSc in Management (International Business)

This 12 month programme provides you with the essential knowledge and critical skills you need to help you become a successful manager. The course draws on the knowledge and workplace experience of a talented group of academics and combines the latest thinking in management theory with the practical skills that you need on the ground. This course focuses on how international business operates across international boundaries to give you a good grounding in the skills you need to work as a manager in today's global market. It differs from the MSc in International Management in that it is aimed at students who have not studied business management before.

### Profile of typical candidate

This programme is likely to appeal to graduates in an unrelated discipline aiming for management and wanting to equip themselves to operate successfully in a global marketplace.

### Entry Specification

A 2:1 honours degree or better, or approved professional qualification.

Our standard English requirement for overseas students is IELTS 7.0 (with no less than 6 in each part). If you are unable to take IELTS we will consider TOEFL 600 with TWE 4.5 (paper-based) on TOEFL 260, TWE 5.0 (computer-based) or equivalent.

### Course content

Two taught semesters, followed by a dissertation.

### Core modules

- Accounting & Financial Management
- International Management
- Managing People in Organisations
- Marketing Management
- Operations and Supply Chain Management
- Strategic Management
- International Business Strategy
- Research Methods

### Optional modules (you choose three)

- Business and Society in East Asia
- Business and Society in Contemporary Korea
- Contemporary Chinese Business and Management
- International Human Resource Studies
- Negotiation and Intercultural Communication

### Teaching

- Lectures
- Seminars
- Case Studies
- Group work for collaborative learning
- Web-based discussion groups

### Assessment

- Individual assignments
- Group projects
- Examinations
- Dissertation

### Certificate/Diploma in Management (International Business)

Students who successfully complete the first semester but do not proceed receive the PG Certificate. Those who pass both semesters' modules but do not complete the dissertation receive the PG Diploma.

### Contact for enquiries:

Karen Hector + 44 (0) 114 222 3379

Email: [K.Hector@sheffield.ac.uk](mailto:K.Hector@sheffield.ac.uk)

Find out more about this course and the School of Management

[www.sheffield.ac.uk/management/postgraduates](http://www.sheffield.ac.uk/management/postgraduates)



The  
University  
Of  
Sheffield.

Management  
School.



# MSc in International Management.

## MSc in International Management

This 12 month Masters programme combines academic rigour with leading edge research to provide a world-class international business education. You will gain a good critical understanding of specific challenges and opportunities facing multinationals and organisations in key regions of the world. Drawing on the combined expertise of the Management School together with our internationally-renowned School of East Asian Studies, you will study the styles of business conducted in the world economy's fastest growing region, East Asia, as well as the more traditional English-speaking and European markets. The programme content is practical so that you learn business skills and real-world solutions you can apply within the workplace.

In the first two semesters you will study core modules (described below) and you can take two options from a rich menu, including international marketing, negotiation and inter-cultural communication, Chinese business and Japanese business. Like the core modules, these modules are taught by internationally-known experts in their field. You may also take a foundation module or two in any topic (like marketing or accounting) where you may feel a need to go over the basics. There will also be the opportunity to take introductory modules in European and East Asian languages. In the third semester, you will submit a written dissertation on an international management topic that interests you.

### Profile of typical candidate

This programme is aimed at those with a good first degree in business or management (single or dual) who wish to add an international dimension to their knowledge and gain a critical appreciation of management principles and practice. Learning from experts in the relevant fields, you will gain an academic qualification ideally suited to prepare you for work in a multinational company. This course will provide an excellent grounding in the reality and specifics of doing business across the world, particularly in Europe, East Asia, and the English-speaking countries.

### Entry specification

You will need a good degree in any subject (normally 2:1 or higher) or approved professional qualification combined with a desire to learn about management principles and practices. You do not need prior management experience. Our normal English requirement for overseas students is IELTS 7.0 (with no less than 6 in each part). If you are unable to take IELTS we will consider TOEFL 600 with TWE 4.5 (paper-based) or TOEFL 260, TWE 5.0 (computer-based) or equivalent.

### Course content

Two taught semesters, followed by a dissertation

#### Core modules

European business  
International business strategy  
International management  
Plus either  
Investing in East Asia or The East Asian Economic Miracle  
Research methods

#### Optional modules

There are a wide range of modules thought the exact combination chosen is subject to regulations. Not all modules may be available every year, and there may be additional modules on offer. Examples of the modules that are available are

- Marketing Management
- Negotiation and Intercultural Communication
- Managing People in Organisations

#### Teaching

- Lectures
- Seminars
- Case Studies
- Group work for collaborative

#### Learning

- Web-based discussion groups

### Assessment

- Individual assignments
- Group projects
- Examinations
- Project

### Certificate/Diploma

Students who successfully complete the first semester but do not proceed receive the PG Certificate. Those who pass both semesters' modules but do not complete the dissertation receive the PG Diploma.

### Contact for enquiries:

Hilda Betts  
+ 44 (0) 114 222 2181

Email:  
[H.betts@sheffield.ac.uk](mailto:H.betts@sheffield.ac.uk)

Find out more about this course and the School of Management

[www.sheffield.ac.uk/management/postgraduates](http://www.sheffield.ac.uk/management/postgraduates)



The  
University  
Of  
Sheffield.

Management  
School.



MSc in  
Management.

## MSc in Management

The MSc in Management is designed for graduates from any disciplinary background. Accredited by AMBA (Association of MBAs), this programme provides you with the knowledge and skills for a career in management. Specialist themes are offered which enable you to specialise in certain areas of management if you wish.

### Profile of typical candidate

This programme is likely to appeal to graduates from any disciplinary background wishing to gain knowledge and a critical appreciation of management principles and practices to pursue a career in management.

### Entry Specification

A 2:1 honours degree or better, or approved professional qualification.

Our standard English requirement for overseas students is IELTS 7.0 (with no less than 6 in each part). If you are unable to take IELTS we will consider TOEFL 600 with TWE 4.5 (paper-based) on TOEFL 260, TWE 5.0 (computer-based) or equivalent.

### Course content

Two taught semesters, followed by a dissertation.

### Core modules

- Accounting & Financial Management
- Managing People in Organisations
- Marketing Management
- Operations and Supply Chain Management
- Strategic Management
- Research Methods

### Optional modules

A wide range including

- Corporate Finance
- International Management
- Corporate Social Responsibility
- Branding
- Strategic Management of Information
- Sustainable Business Models

### Teaching

- Lectures
- Seminars
- Case Studies
- Group work for collaborative learning
- Web-based discussion groups

### Assessment

- Individual assignments
- Group projects
- Examinations
- Dissertation

### Certificate/Diploma in Management

Students who successfully complete the first semester but do not proceed receive the PG Certificate.

Those who pass both taught semesters' modules but do not complete the dissertation receive the PG Diploma.

### Contact for enquiries:

Hilda Betts + 44 (0) 114 222 2181

Email: [H.betts@sheffield.ac.uk](mailto:H.betts@sheffield.ac.uk)

Find out more about this course and the School of Management

[www.sheffield.ac.uk/management/postgraduates](http://www.sheffield.ac.uk/management/postgraduates)